

# Finished Camps

From Hill View Mini Barns

Hill View Mini Barns offers a full range of camps that can be built in a matter of weeks and dropped off at your location ready to use. These economical camps are ideal for hunting camps or lakeside cabins, but the uses don't stop there! Our camps have been used for rental cabins, offices, massage parlors, art studios, roadside stands, and more.

Our camps are highly customizable. If you're handy and want to save some money, we can build a camp shell featuring insulated door, vinyl windows, and insulated floor. We leave the rest up to you. If a turn-key camp is more your style, we will do the insulation, wiring, plumbing, kitchen, bathroom, flooring, and pine interior, and drop it off at your location often as soon as 12 weeks of placing your order! If you're somewhere in between, you can pick and choose what you want us to do in our highly efficient shop and what you would like to do yourself.

Keep in mind: these camps are designed primarily as seasonal cabins and are not designed or approved for a year-round residence. Typically, we deliver our camps onto a level gravel pad. If no indoor plumbing is needed, 4-season use is straightforward. If plumbing is involved, this is usually accessed via a 3'x6' pit on one side. This does not provide adequate frost protection, so winterization is required. If you would like to build a camp on a concrete slab, piers, or frost walls, please give us a call to discuss further.

Turn the page to discover more about the quality construction we stand behind with a 5 year warranty, as well as sample floor plans and prices!



Phone: (207) 269-2800

Email: [sales@hillviewminibarns.com](mailto:sales@hillviewminibarns.com)

**Due to changing material prices, there will be a lumber surcharge added on all posted prices. Please call for current pricing.**

# Construction Overview

## Main Shell Standard Features

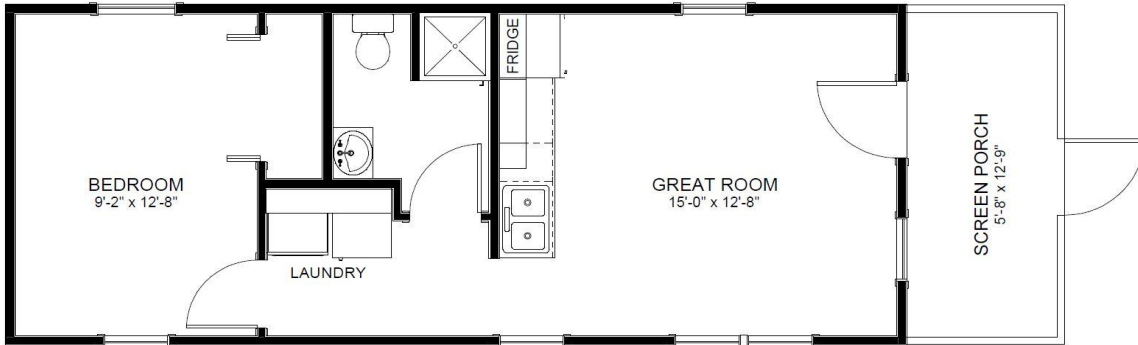
- Width to outside of walls is 13'-4" with 4" overhangs
- Walls built with 2x4 studs spaced 16" o.c. sheathed with Smartside (your choice of 17 colors!)
- 2x8 floor joists on two 6x6 pressure treated skids and ¾" T&G Advantech subfloor
- 90 PSF Roof built with 2x6 rafters spaced 16" o.c. with 7/16" Techshield© and roofing paper
- 30 year architectural shingles standard. Ribbed metal optional upgrade.
- Windows are insulated vinyl in white
- Door is 36" 9-lite, insulated, fiberglass in white or 6' slider as shown on plan
- 6'x14' porch with log railing
- Floor insulated with 2" TUFF-R insulation (R-13)

## Finished Acadia Camp Features

- Deeper roof overhangs with 1x6 fascia
- Fiberglass insulation (R-13 walls; R-19 ceiling)
- Electrical wiring to residential code (fixtures included)
- Finished plumbing to residential code (fixtures included)
- Finished bathroom with 32" shower, commode, vanity sink, and medicine cabinet
- Kitchenette with stained maple cabinets, laminate counters, sink, cooktop, and microwave
- Fusion Summit floating floor in "Mesa Verde"
- V-match pine with a 2-coat poly finish on all walls and ceiling
- Solid pine 6-panel doors
- Full height screens and screen door on end porch
- "Web gable" in end porch

## Additional Options

- 3-season porch with 4-track, vertical sliding windows
- Siding upgrades including: Dutch Lap, painted Board & Batten, ship-lap pine, or "half log".
- Metalbestos chimney
- Windows in "Clay" with or without grids
- Painted entry door
- False Dormer (Included on Side Porch models)
- Spray foam insulation (Upgrade from rigid foam in floor and fiberglass in walls & ceiling)
- Changes to floor plan, window size/quantity
- Storm door (recommended for exterior doors not covered by porch)



**14x40** **\$47,430**

454 sq. ft. finished  
80 sq. ft. screen porch

Shell Only **\$15,540**

*Tax & Delivery Not Included*

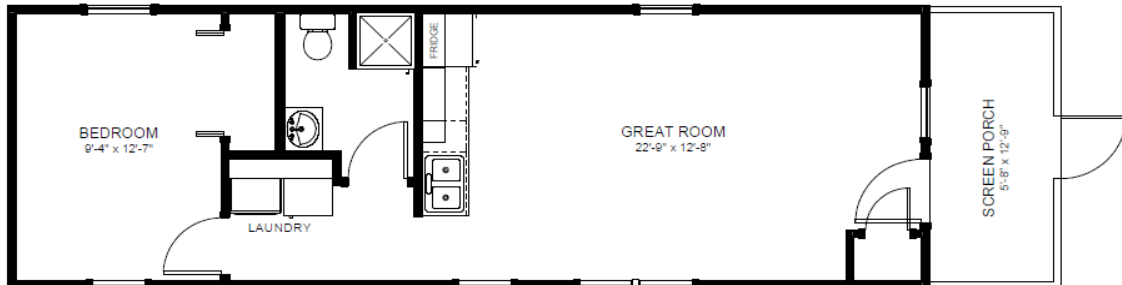


**14x44** **\$50,395**

507 sq. ft. finished  
80 sq. ft. screen porch

Shell Only **\$16,365**

*Tax & Delivery Not Included*



**14x48** **\$53,255**

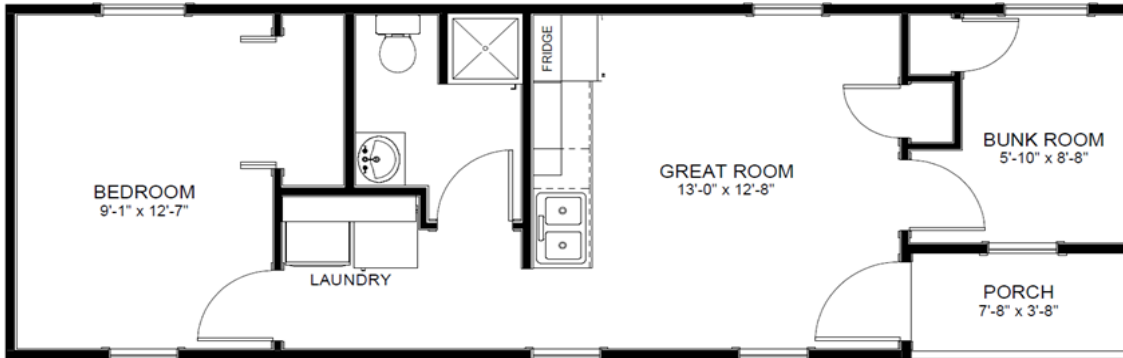
560 sq. ft. finished  
80 sq. ft. screen porch

Shell Only **\$17,805**

*Tax & Delivery Not Included*

# Acadia with Corner Porch with 2 Bedroom

2021

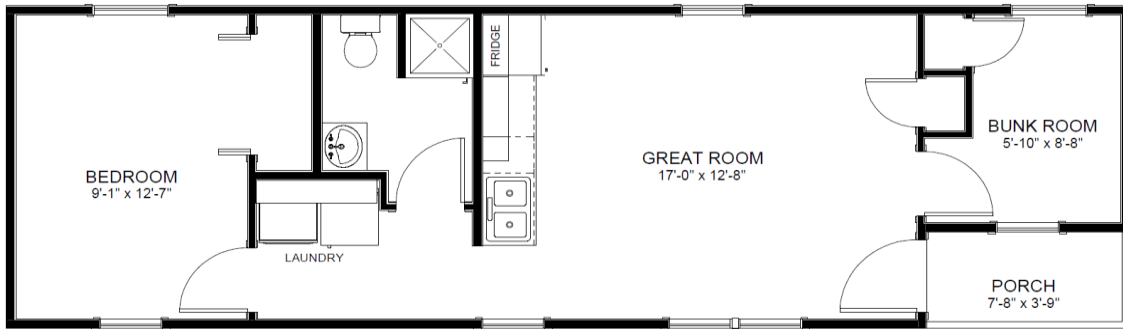


**14x40** **\$51,000**

506 sq. ft. finished  
28 sq. ft. porch

Shell Only **\$15,640**

*Tax & Delivery Not Included*

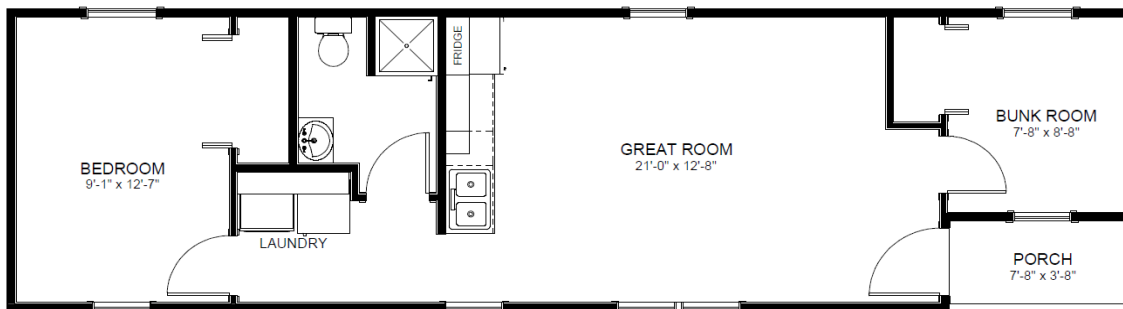


**14x44** **\$53,380**

559 sq. ft. finished  
28 sq. ft. porch

Shell Only **\$16,730**

*Tax & Delivery Not Included*



**14x48** **\$55,980**

612 sq. ft. finished  
28 sq. ft. porch

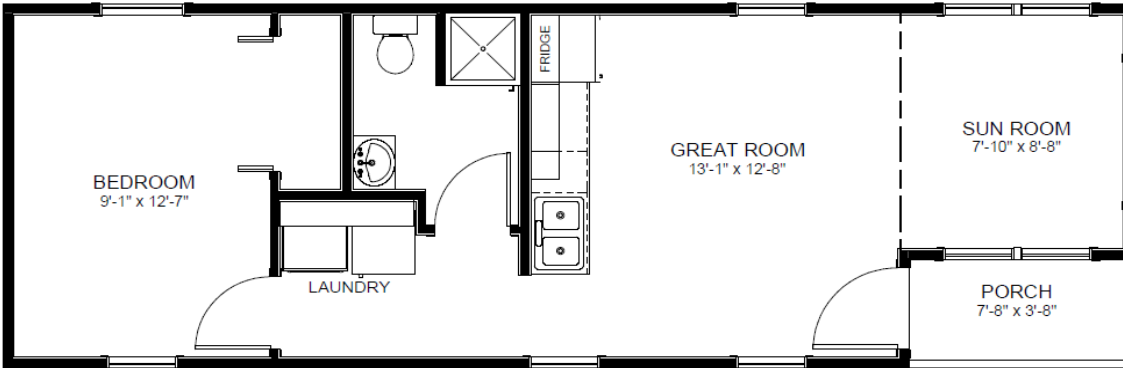
Shell Only **\$18,170**

*Tax & Delivery Not Included*

Other sizes also available

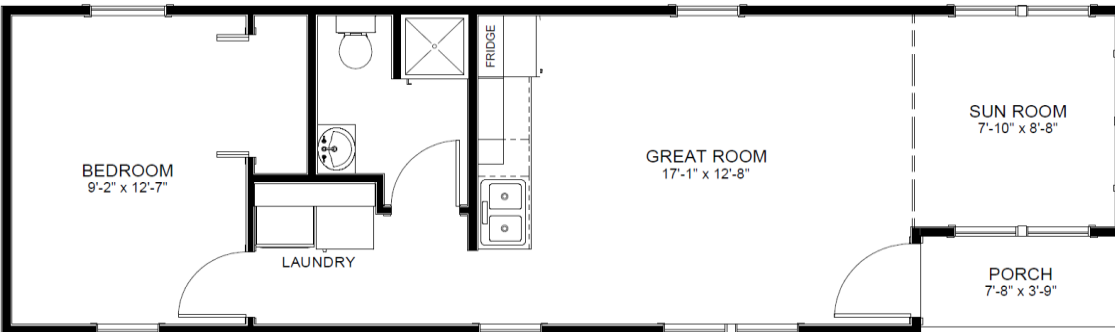
# Acadia with Corner Porch & Sun Room

2021



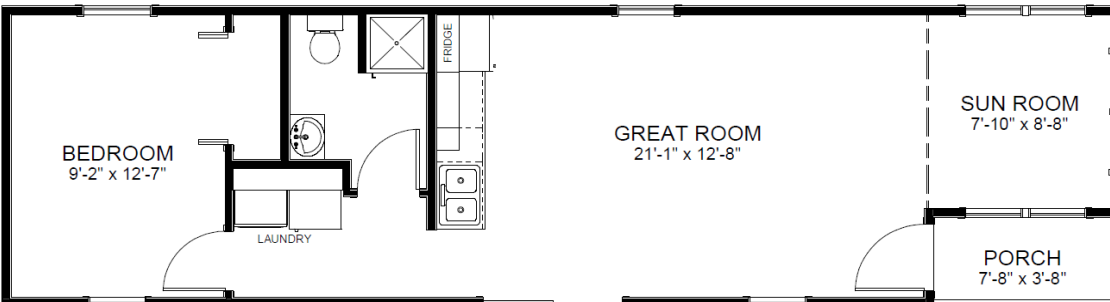
<b>14x40</b>	<b>\$49,575</b>
506 sq. ft. finished	
28 sq. ft. porch	
Shell Only	\$16,835

*Tax & Delivery Not Included*



<b>14x44</b>	<b>\$51,670</b>
559 sq. ft. finished	
28 sq. ft. porch	
Shell Only	\$17,660

*Tax & Delivery Not Included*



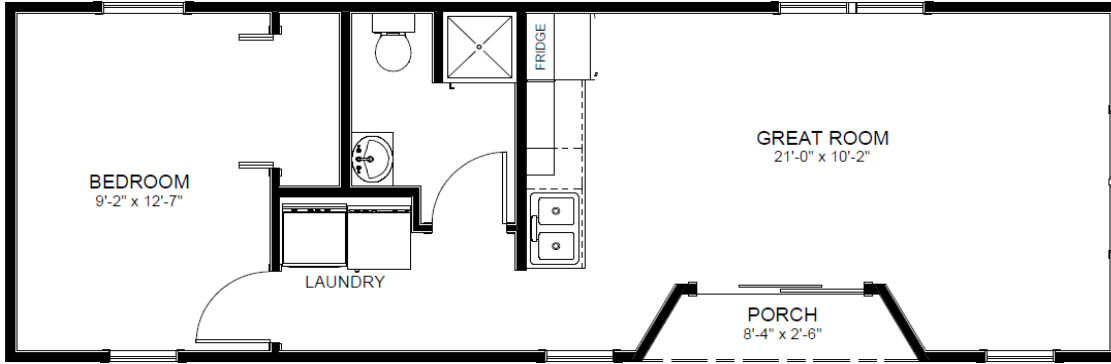
<b>14x48</b>	<b>\$55,210</b>
612 sq. ft. finished	
28 sq. ft. porch	
Shell Only	\$19,925

*Tax & Delivery Not Included*

Other sizes also available

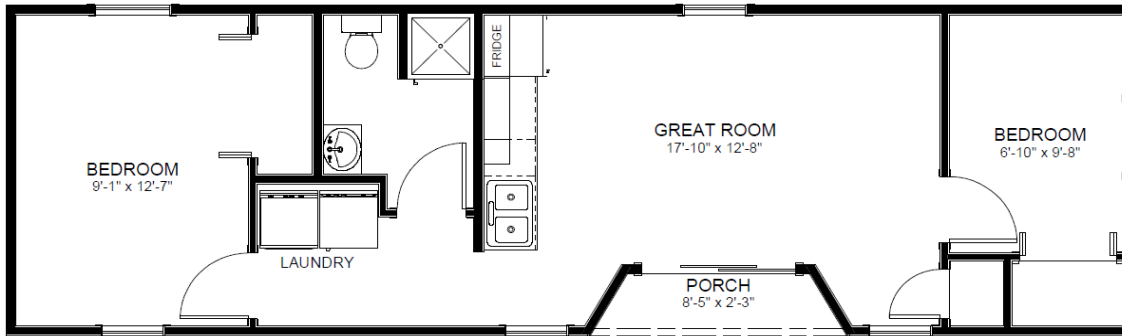
# Acadia with Side Porch

2021



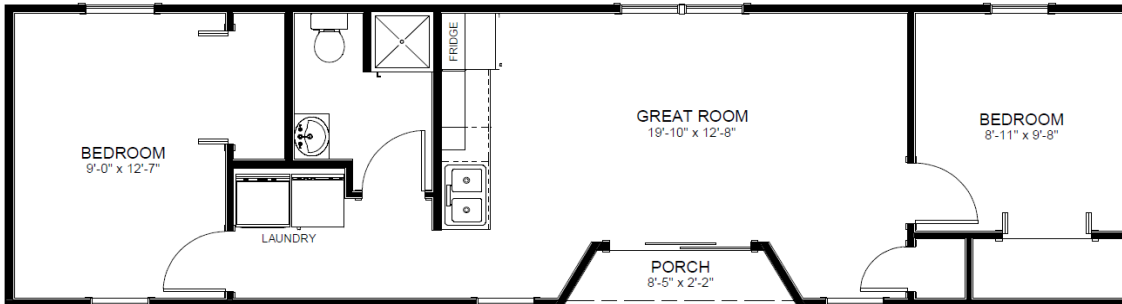
**14x40** **\$49,815**  
 512 sq. ft. finished  
 22 sq. ft. porch  
 Shell Only \$16,920

*Tax & Delivery Not Included*



**14x44** **\$54,775**  
 565 sq. ft. finished  
 22 sq. ft. porch  
 Shell Only \$17,305

*Tax & Delivery Not Included*



**14x48** **\$57,540**  
 618 sq. ft. finished  
 22 sq. ft. porch  
 Shell Only \$19,220

*Tax & Delivery Not Included*

Other sizes also available