



1310 Stage Rd (Rte. 2)  
Etna, ME 04434

## Chicken Coops

1520 Alfred Rd (Rte. 111)  
Lyman, ME 04002

247 Main Rd (Rte. 1A)  
Holden, ME 04429

242 Middle Rd (Rte. 9)  
Sabattus, ME 04280

158 Lewiston Rd  
Gray, ME 04039

Call 207-269-2800 or information

[www.hillviewminibarns.com](http://www.hillviewminibarns.com)

[info@hillviewminibarns.com](mailto:info@hillviewminibarns.com)

### 6x8 Chicken Coop--\$2,540.00



- 30 year SmartSide® painted – choose from 16 colors
- 2x4 16" o.c. - 2 pressure treated 4x4 skids
- 2-single pane hinged tilt out window with wire mesh
- Single entry door 32"x73.5"
- 14"x16" Chicken door with ramp
- 4-Hole nesting box

### 6x10 Chicken Coop--\$2,685.00



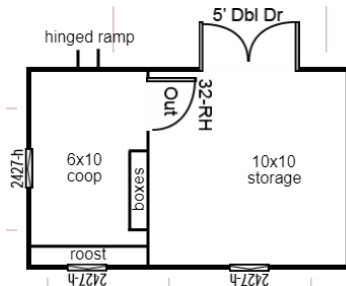
- 30 year SmartSide® painted – choose from 16 colors
- 2x4 16" o.c. - 2 pressure treated 4x4 skids
- 2-single pane hinged tilt out window with wire mesh
- Single entry door 32"x73.5"
- 14"x16" Chicken door with ramp
- 4-Hole nesting box

### 8x10 Chicken Coop--\$3,070.00



- 30 year SmartSide® painted – choose from 16 colors
- 2x4 16" o.c. - 3 pressure treated 4x4 skids
- 2-single pane hinged tilt out window with wire mesh
- Single entry door 32"x73.5"
- 14"x16" Chicken door with ramp
- 4-Hole nesting box

### 10x16AF Shed / Coop--\$4,810.00



- 30 year SmartSide® painted – choose from 16 colors
- 2x4 16" o.c. - 5 pressure treated 4x4 skids
- 3-single pane hinged tilt out window with wire mesh
- 5' wide double doors
- Single entry door 32"x73.5" (inside)
- 14"x16" Chicken door with ramp
- 4-Hole nesting box
- Offers 6x10 coop & 10x10 storage

**Due to changing material prices, there will be a lumber surcharge added on all posted prices. Please call for current pricing.**  
Other sizes and models are available. Ask a sales rep for more information.