



SHOOTIN' HOUSE



2022 EDITION

**ASSEMBLY
MANUAL**

SHOOTIN' HOUSE ASSEMBLY MANUAL

INTRODUCTION

Follow this guide to assemble Shootin' House Blind from start to finish.

If you purchased a tower stand with your blind, please refer to that assembly guide to assemble the tower first, then come back to finish the setup of the blind on the fully assembled tower stand.



SUPPLIES NEEDED

- T-50 construction stapler
- Utility knife
- Impact Driver
- Caulk gun
- Level
- Flat bar or prybar
- 4 - 8" - 12" Pressure Treated 4 X 4s

PARTS LIST

- 1 floor
- 1 floor carpet
- 3 wall panels
- 1 door panel
- 1 roof
- Caulk
- 1 touch up kit
- 1 set of keys

SAFETY DISCLAIMER

At no time shall 360 Hunting Blinds be liable for any accidents due to normal or improper use of blinds or tower stands.

We recommend that you follow standard safety procedures when entering and exiting the blind, or climbing or descending the ladder.

Always use a gear rope to raise and lower your equipment into the blind.

Always use the handrail with both hands when climbing the ladder.

Never use the door handle to pull yourself onto the platform or stabilize your entry and exit.

STEP 1

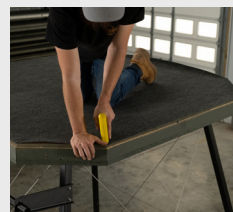
INSTALL THE LEGS

Install 8" – 12" 4x4s into the pockets on the floor and secure with 3 – 3" deck screws per foot. If you purchased a tower stand you may skip this step.

STEP 2

INSTALL THE CARPET

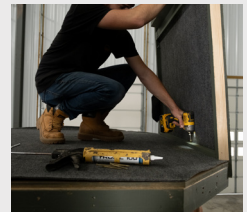
Align the carpet roll to the edges of the blind floor and begin fastening with the T50 Construction Stapler. Work from one end of the floor to the other, working out the wrinkles and continually aligning the edges while going along. If some carpet overhangs past the edge of the floor, use a utility knife to cut the carpet back so it is no longer overhanging.



STEP 3

INSTALL THE FIRST PANEL

Set the first panel into place. Have one person hold the top of the panel while another person aligns the bottom. Make sure the corners of the panel match with the corner of the floor and that the panel doesn't gap away from the floor. Use a screw to secure the panel to the floor from the inside.

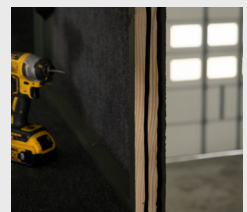


STEP 4

CAULK PANEL EDGE

Run a 3/8" bead of caulk along the leading edge where the second panel will meet the first. Make sure to caulk on the siding between the interior framing and the outside of the blind.

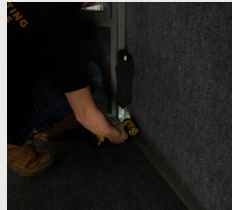
Remember, the better the seal the longer the blind will last!



STEP 5

INSTALL WALL PANELS

Start at the top of the panel, align the tops and outsides of the panels to make sure they are even. Then work down the panel keeping everything together and running several screws while going down.



STEP 6

REPEAT

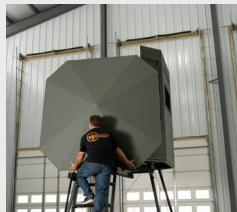
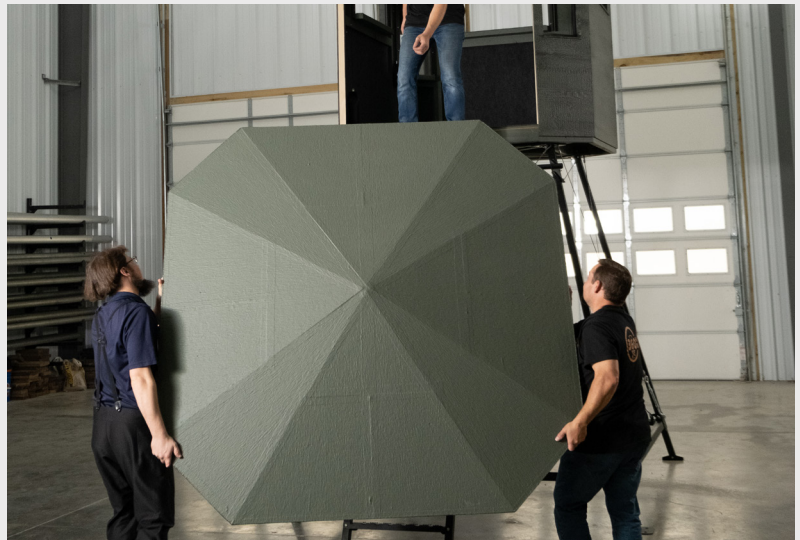
Repeat steps 4 and 5 for the remaining panels except the door panel.



STEP 7

LIFT THE ROOF

Lift the roof to the top of the blind and rest it on the walls. Set it toward the back of the blind far enough to have room to install the remaining wall panel and door panel.



STEP 8

INSTALL THE DOOR PANEL

With the roof and wall panels in place it's finally time to install the door. Get the door close to the blind, have one person hold the panel while another person applies caulk to wall panels. Then set the door panel in place and fasten like the other wall panels. Screws that go into the floor may have to be removed to move walls into place and get a tighter seal.



STEP 9

FASTEN THE ROOF

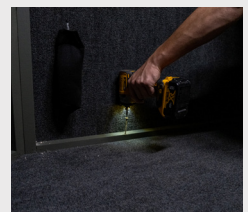
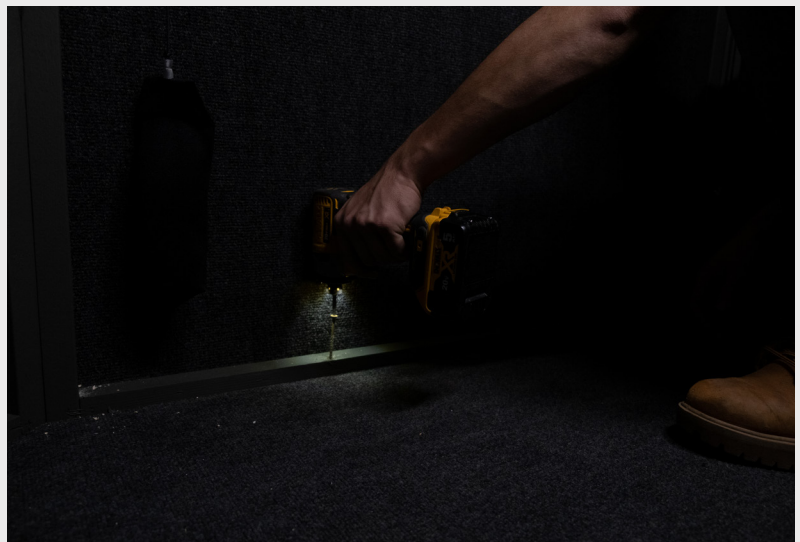
The next step is to fasten the roof to the top of the wall panels. Center the roof on the blind, aligning the roof with the wall panel joints. Start above the door and screw through the top of the wall panel into the roof panel with SHORT screws, aligning as you work toward the back of the blind. Run plenty of screws to ensure the roof can't come off.



STEP 10

FASTEN THE WALLS

If there are wrinkles in the carpet, use a flat bar or prybar to lift the wall panels and push wrinkles back out. Then fasten the wall panels to the floor with several screws.



STEP 11

TOUCH UP

Use the touch up paint to touch up any nicks or scratches that can occur during setup. Any unpainted siding will rot faster than painted siding so be particular when painting.