

# Recreational Camps

By Hill View Mini Barns

ACADIA



KATAHDIN



ROCKWOOD



- ~ Recreational Use
- ~ Hunting Cabin
- ~ Weekend getaway
- ~ Vacation Rental
- ~ Bunkhouse



Phone: (207) 269-2800

Email: [sales@hillviewminibarns.com](mailto:sales@hillviewminibarns.com)

[www.hillviewminibarns.com](http://www.hillviewminibarns.com)



# Acadia



~ 14x36 up to 14x56

~ 1 to 2 bedrooms

~ Laundry

~ Full Bath

~ Kitchen

~ Interior Pine



Phone: (207) 269-2800

Email: [sales@hillviewminibarns.com](mailto:sales@hillviewminibarns.com)

[www.hillviewminibarns.com](http://www.hillviewminibarns.com)

# Acadia Construction Overview

## Main Shell Standard Features

- ~ Width to outside of walls is 13'-4" with 4" eave overhangs
- ~ Walls built with 2x4 studs spaced 16" O.C. sheathed with Smartside (your choice of 17 colors!)
- ~ 2x8 floor joists on two 6x6 pressure treated skids and ¾" T&G Advantech subfloor
- ~ 90 PSF Roof built with 2x6 rafters spaced 16" o.c. with 7/16" Techshield© and roofing paper
- ~ 30 year architectural shingles or corrugated metal.
- ~ Windows are insulated vinyl in white
- ~ Door is 36" 9-lite, insulated, fiberglass in white or 6' slider as shown on plan
- ~ 6'x13'-4" porch with log railing

## Insulation

- ~ Walls: R13 fiberglass batts
- ~ Ceiling: R19 fiberglass batts
- ~ Floor: R13 2" TUFF-R Thermosheath

## Interior

- ~ Coretec Vinyl Plank in "Kingswood Oak"
- ~ Walls & ceilings finished in ¾" tongue & groove knotty-pine boards with 3-coat clear finish
- ~ Knotty-pine solid wood interior doors (v-groove arch top) with Schlage® lever latches

## Kitchen

- ~ Solid Maple cabinetry with full-extension, soft-close doors & drawers
- ~ Laminate Countertop (Oiled Soapstone)
- ~ Double-Basin Stainless Steel Kitchen Sink (Includes Drain/Strainer)
- ~ Wall mounted microwave (Black)
- ~ Empava 12", 2-Burner Tempered Glass Electric Induction Cooktop (OR 2 Burner Propane Drop-In Cooktop, Black)

## Bathroom

- ~ Showers is 1-piece fiberglass unit – White color
- ~ Solid Maple vanity cabinetry with cultured marble 1-piece top/sink – White color
- ~ RE160iP Rinnai Propane water heater - indoor tankless (OR AO Smith Electric 30 Gallon tank)
- ~ Exhaust fan/light combination in ceiling, light over sink, and 20 amp GFCI receptacle at sink
- ~ Medicine cabinet at sink

## Electrical

- ~ 200 amp panel box with breakers (100 amp on camps 36' or shorter)
- ~ Completed by a licensed electrician to residential code

## Acadia Camp Permit Information

This document is to be given to local Code Enforcement Officer (hereafter “CEO”) when applying for your permit.

### **Plumbing:**

~ Plumbing permit is obtained by the Etna CEO Randy Hall, the town in which these camps are constructed

~ Plumbing is completed by a licensed plumber

~ Etna CEO performs plumbing inspections

~ Pictures & Plumbing permit are available for your town’s local plumbing inspector

~ An additional Plumbing permit will need to be obtained from the town for which the building is delivered to for the purpose of plumbing connections

*State Plumbing inspector, Michael Day, has met with Hill View and has confirmed that all plumbing is completed to code for the state of Maine*

### **Electrical:**

~ Electrical is completed by a licensed electrician

~ Electrical for each camp is inspected by licensed electrical inspector, Kern Butler

~ Electrical certification is available for your town’s local electrical inspector

*If your CEO has any questions, please refer them to Randy Weaver at Hill View Mini Barns 207-269-2004*

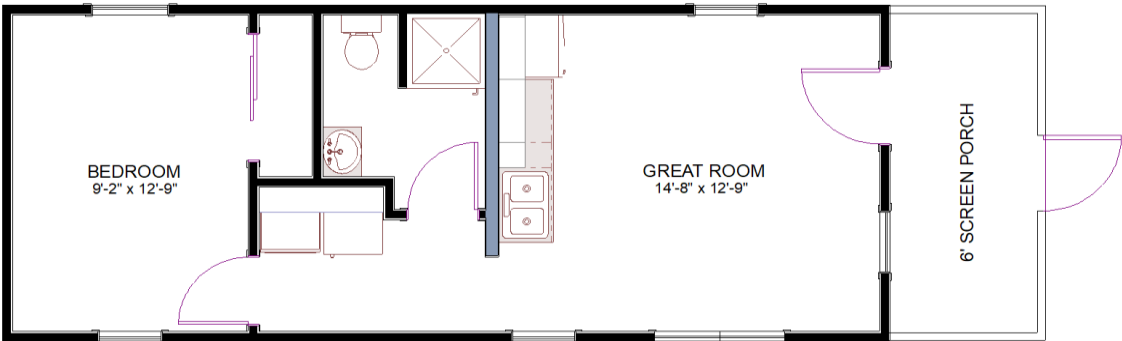






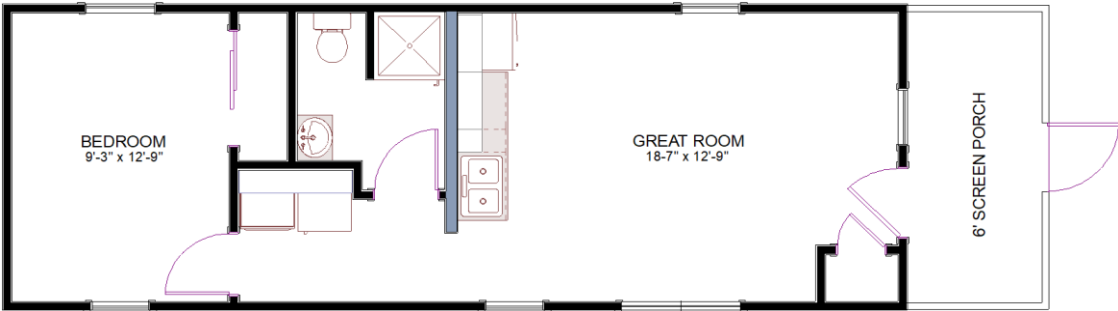
<b>13'4"x36</b>	<b>\$59,245</b>
400 sq. ft. finished	
80 sq. ft. porch	
Shell Only	\$18,995

Tax & Delivery Not Included



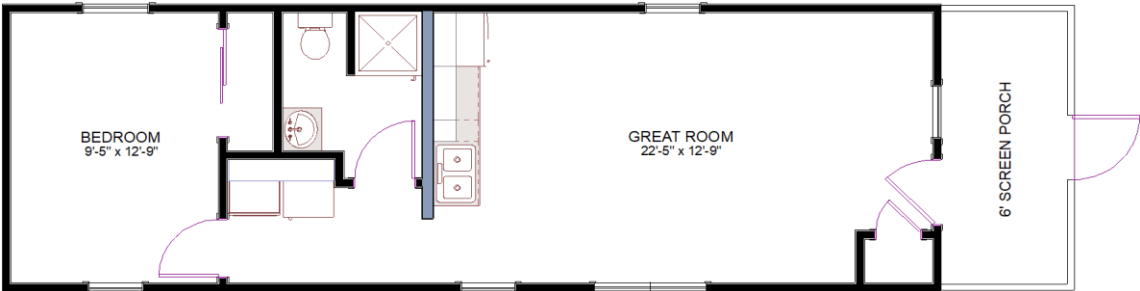
<b>13'4"x40</b>	<b>\$66,990</b>
450 sq. ft. finished	
80 sq. ft. porch	
Shell Only	\$20,710

Tax & Delivery Not Included



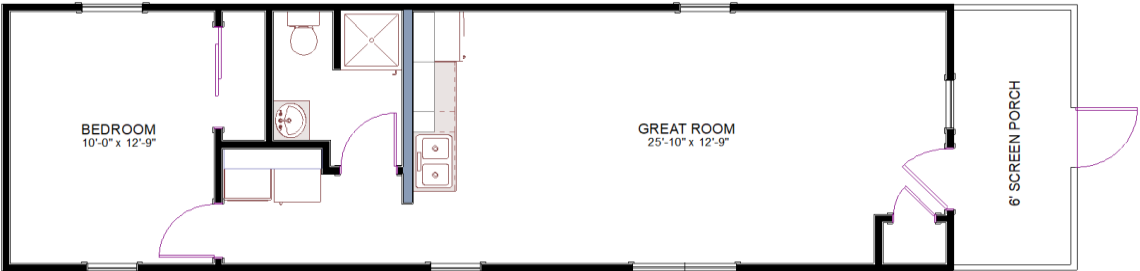
<b>13'4"x44</b>	<b>\$71,330</b>
505 sq. ft. finished	
80 sq. ft. porch	
Shell Only	\$21,990

Tax & Delivery Not Included



<b>13'4"x48</b>	<b>\$75,275</b>
560 sq. ft. finished	
80 sq. ft. porch	
Shell Only	\$23,340

Tax & Delivery Not Included



<b>13'4"x52</b>	<b>\$78,145</b>
560 sq. ft. finished	
80 sq. ft. porch	
Shell Only	\$24,500

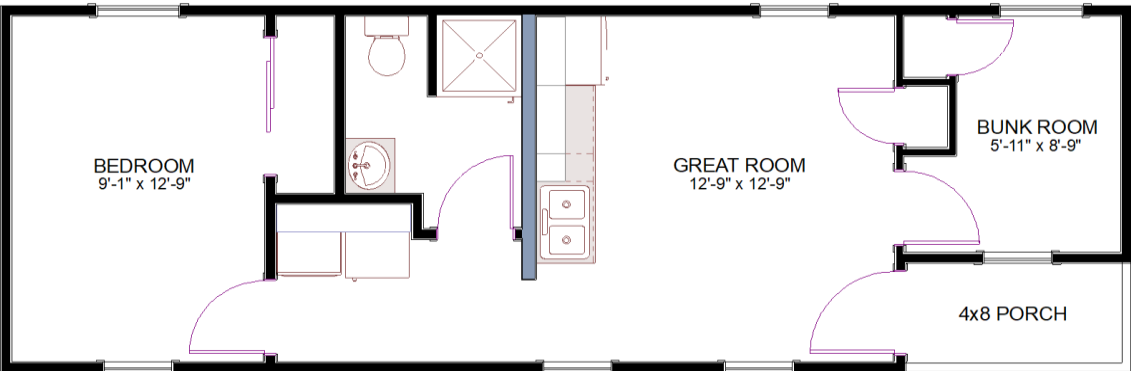
Tax & Delivery Not Included



<b>13'4"x56</b>	<b>\$81,125</b>
665 sq. ft. finished	
80 sq. ft. porch	
Shell Only	\$25,765

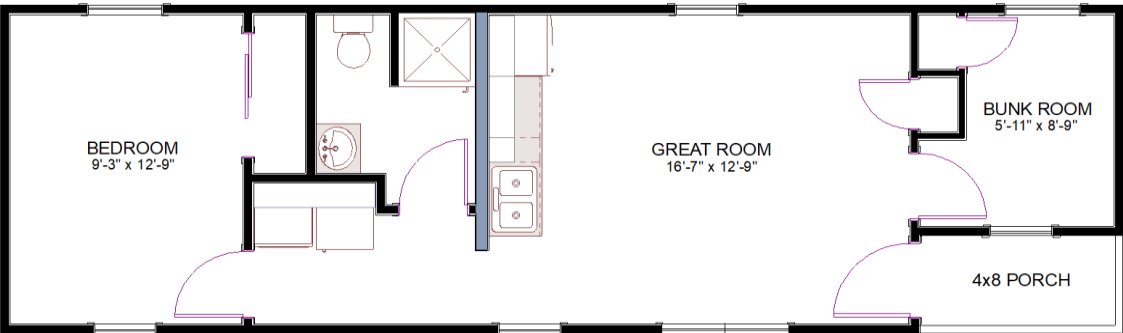
Tax & Delivery Not Included





<b>13'4"x40</b>	<b>\$71,935</b>
500 sq. ft. finished	
28 sq. ft. porch	
Shell Only	\$19,900

Tax & Delivery Not Included



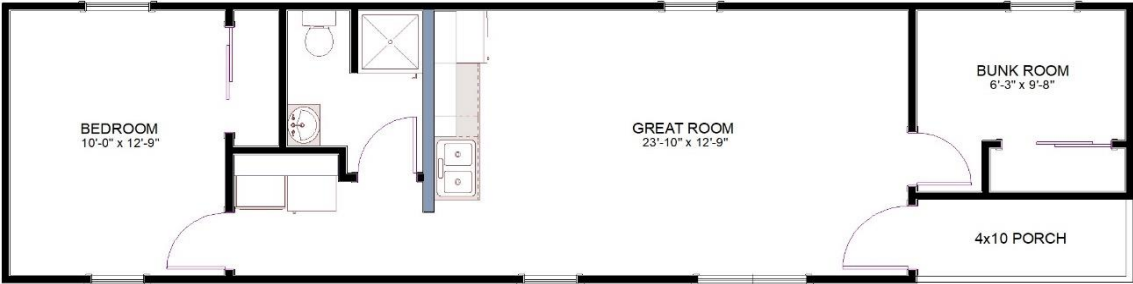
<b>13'4"x44</b>	<b>\$75,345</b>
555 sq. ft. finished	
28 sq. ft. porch	
Shell Only	\$21,600

Tax & Delivery Not Included



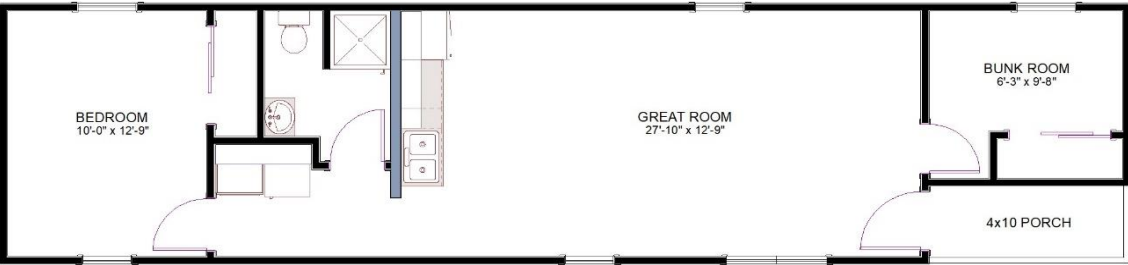
<b>13'4"x48</b>	<b>\$78,790</b>
605 sq. ft. finished	
28 sq. ft. porch	
Shell Only	\$22,955

Tax & Delivery Not Included



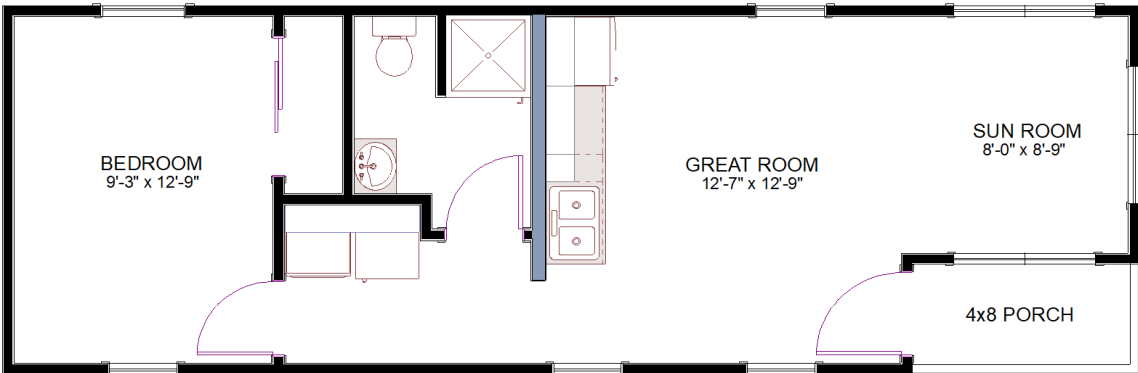
<b>13'4"x52</b>	<b>\$81,610</b>
610 sq. ft. finished	
28 sq. ft. porch	
Shell Only	\$23,740

Tax & Delivery Not Included



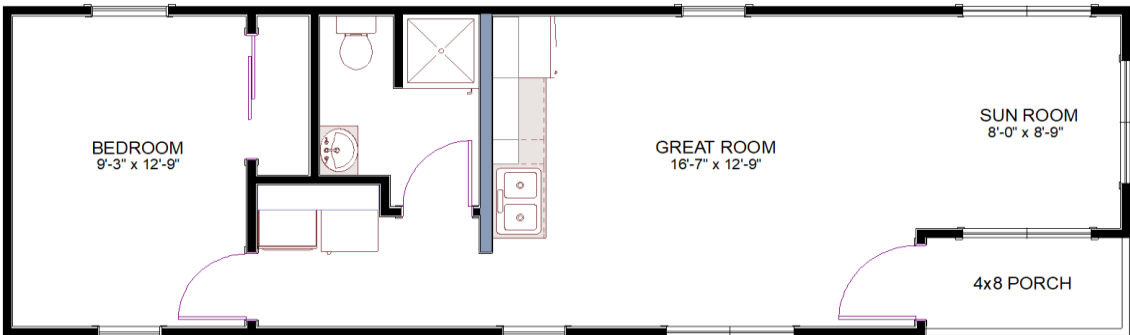
<b>13'4"x56</b>	<b>\$84,610</b>
665 sq. ft. finished	
28 sq. ft. porch	
Shell Only	\$25,155

Tax & Delivery Not Included



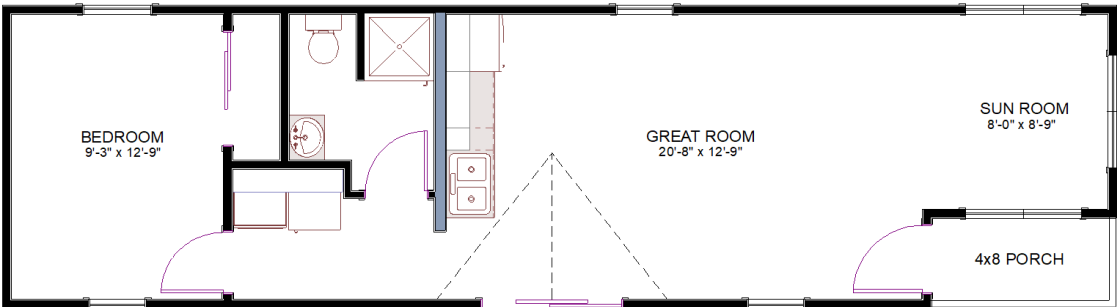
<b>13'4"x40</b>	<b>\$68,885</b>
500 sq. ft. finished	
28 sq. ft. porch	
Shell Only	\$21,785

Tax & Delivery Not Included



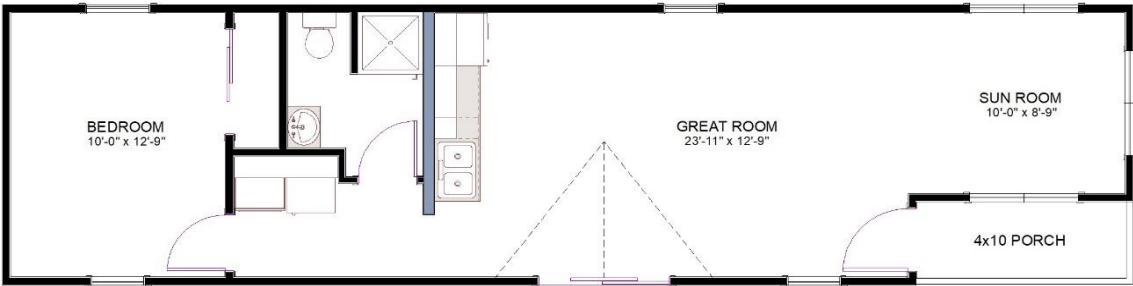
<b>13'4"x44</b>	<b>\$71,795</b>
555 sq. ft. finished	
28 sq. ft. porch	
Shell Only	\$23,060

Tax & Delivery Not Included



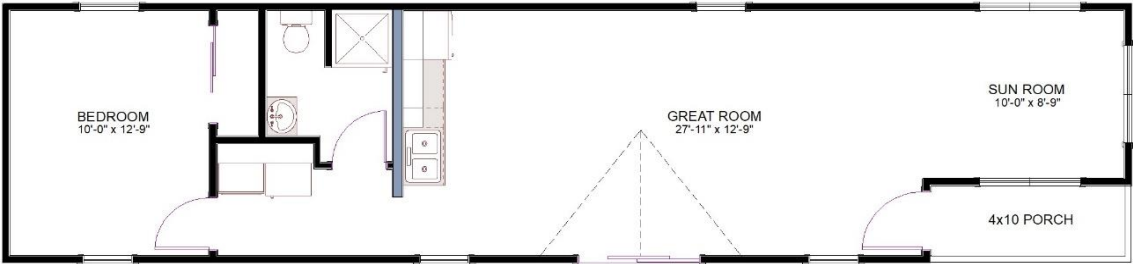
<b>13'4"x48</b>	<b>\$78,135</b>
605 sq. ft. finished	
28 sq. ft. porch	
Shell Only	\$26,385

Tax & Delivery Not Included



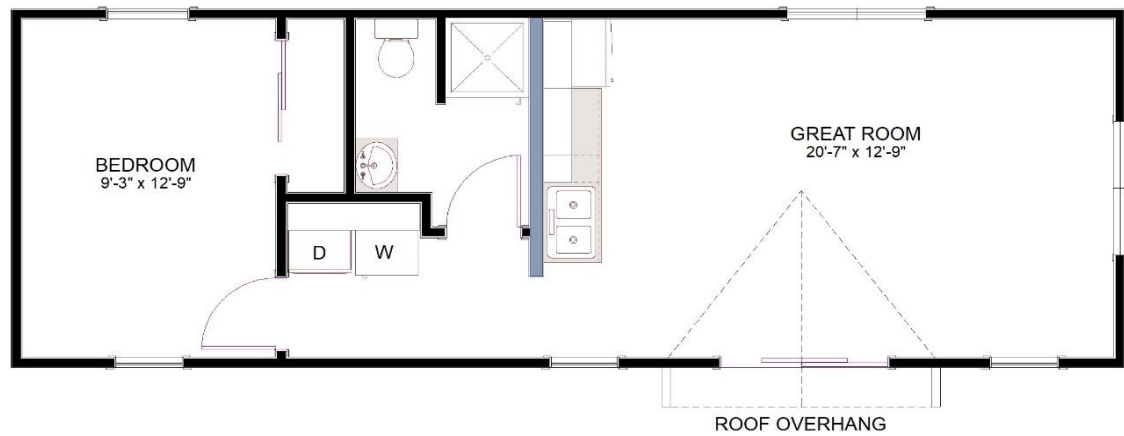
13'4"x52	\$81,010
610 sq. ft. finished	
28 sq. ft. porch	
Shell Only	\$27,615

Tax & Delivery Not Included



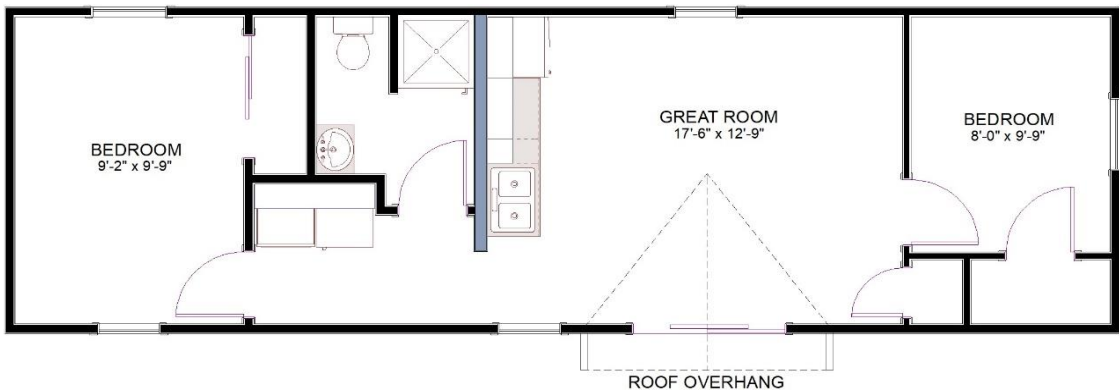
13'4"x56	\$83,985
665 sq. ft. finished	
28 sq. ft. porch	
Shell Only	\$28,880

Tax & Delivery Not Included



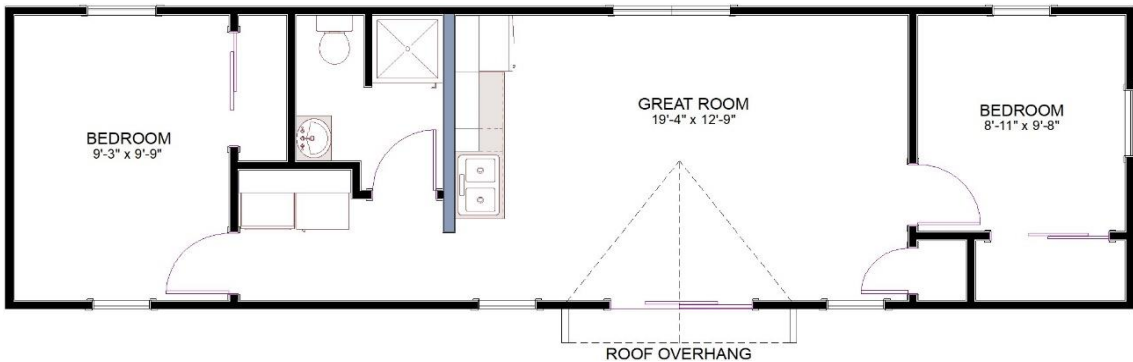
<b>13'4"x40</b>	<b>\$70,015</b>
510 sq. ft. finished	
22 sq. ft. porch	
Shell Only	\$22,615

Tax & Delivery Not Included



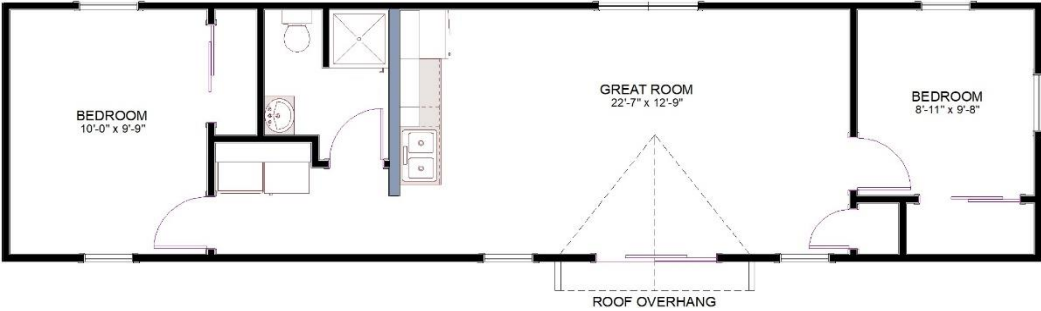
<b>13'4"x44</b>	<b>\$78,090</b>
560 sq. ft. finished	
22 sq. ft. porch	
Shell Only	\$23,165

Tax & Delivery Not Included



<b>13'4"x48</b>	<b>\$83,030</b>
615 sq. ft. finished	
22 sq. ft. porch	
Shell Only	\$25,240

Tax & Delivery Not Included



13'4"x52

\$86,030

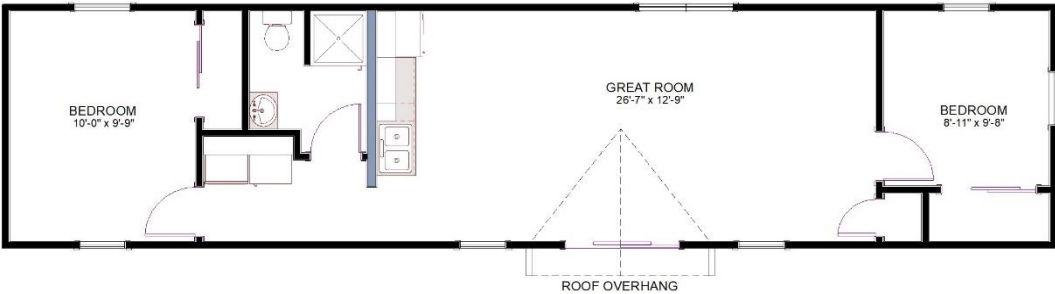
670 sq. ft. finished

22 sq. ft. porch

Shell Only

\$26,400

Tax & Delivery Not Included



13'4"x56

\$88,885

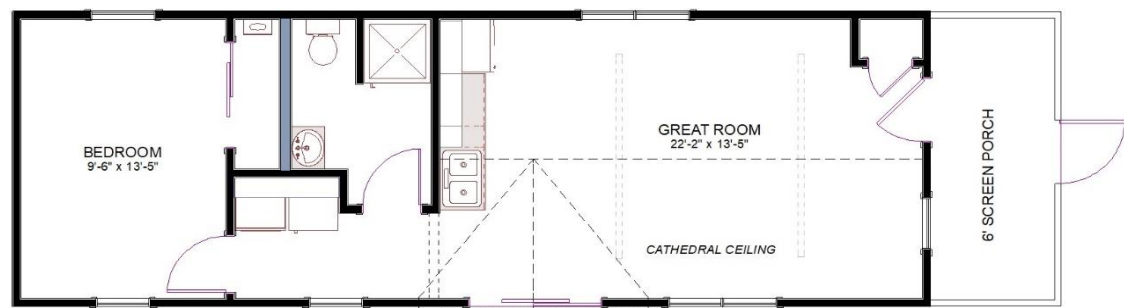
725 sq. ft. finished

22 sq. ft. porch

Shell Only

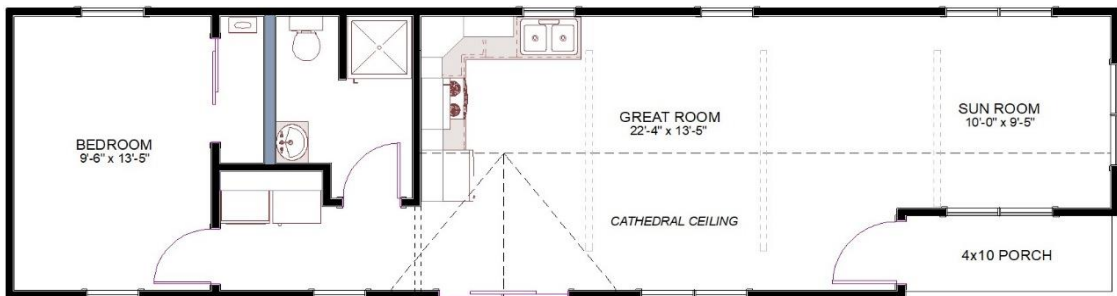
\$27,660

Tax & Delivery Not Included



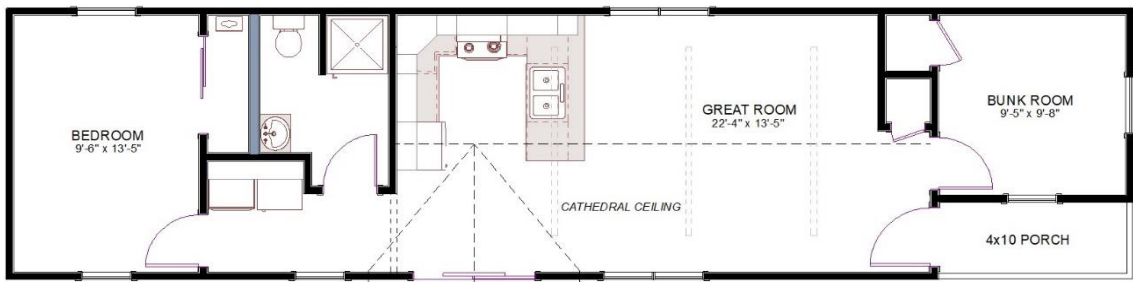
<b>14x48</b>	<b>\$88,195</b>
588 sq. ft. finished	
72 sq. ft. porch	
Shell Only	\$22,615

Tax & Delivery Not Included



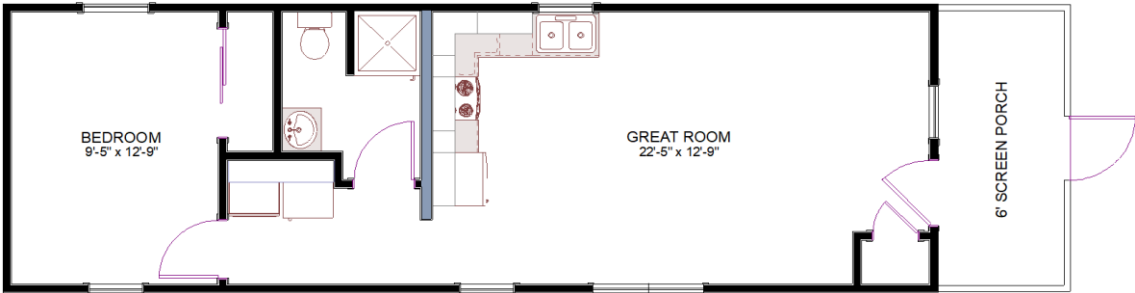
<b>14x52</b>	<b>\$91,555</b>
688 sq. ft. finished	
40 sq. ft. porch	
Shell Only	\$23,165

Tax & Delivery Not Included



<b>14x56</b>	<b>\$100,755</b>
744 sq. ft. finished	
40 sq. ft. porch	
Shell Only	\$25,240

Tax & Delivery Not Included



13'4"x48

\$76,805

560 sq. ft. finished  
80 sq. ft. screen porch

Shell Only

\$22,940

Tax & Delivery Not Included



13'4"x52

\$79,940

610 sq. ft. finished  
80 sq. ft. screen porch

Shell Only

\$24,365

Tax & Delivery Not Included



13'4"x56

\$82,890

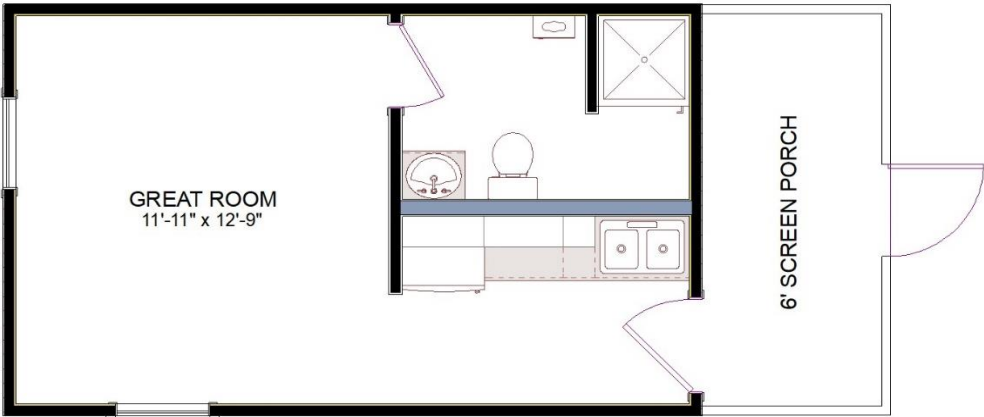
665 sq. ft. finished  
80 sq. ft. screen porch

Shell Only

\$25,695

Tax & Delivery Not Included





**13'4"x28      \$47,825**

Option A    308 sq. ft. finished  
                  80 sq. ft. porch

**Shell Only      \$14,540**

*Tax & Delivery Not Included*



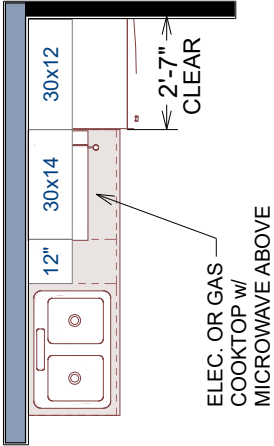
**13'4"x28      \$47,330**

Option B    308 sq. ft. finished  
                  80 sq. ft. porch

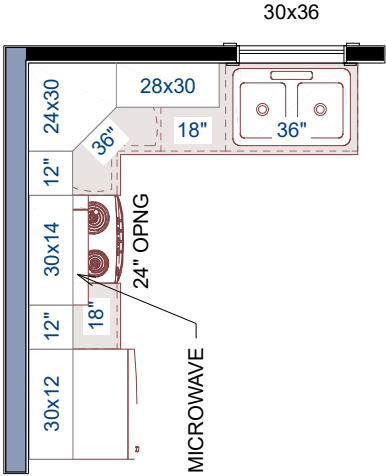
**Shell Only      \$14,200**

*Tax & Delivery Not Included*

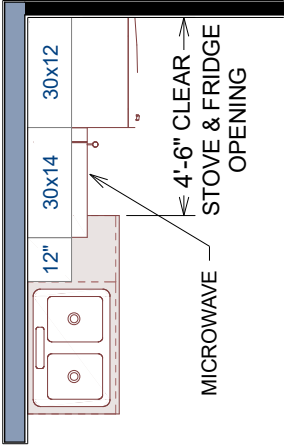
**KITCHEN 'A'**



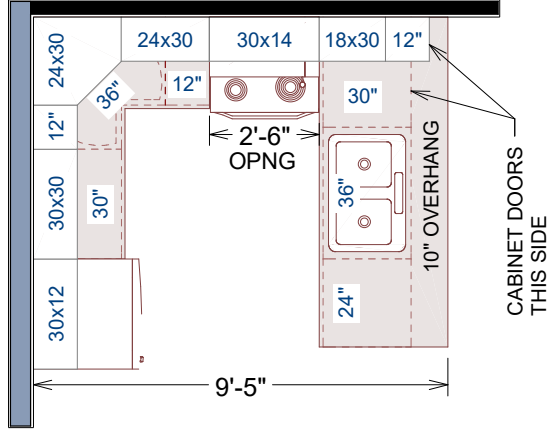
**KITCHEN 'C'**



**KITCHEN 'B'**



**KITCHEN 'D'**



**\*\*NOTE: KITCHENS "C" AND "D" MAY ONLY BE USED IN CAMPS THAT WILL HAVE FULL ACCESS BELOW THE FLOOR (SET ON PIERS OR WALLS); PLUMBING CONNECTIONS ARE NOT FEASIBLE FOR CAMPS SET DIRECTLY ON A SLAB. \*\***

DRAWINGS PROVIDED BY:



PROJECT DESCRIPTION:

**RECREATIONAL CAMP**

SHEET TITLE:

**KITCHEN OPTIONS**

NO. DESCRIPTION

BY

DATE

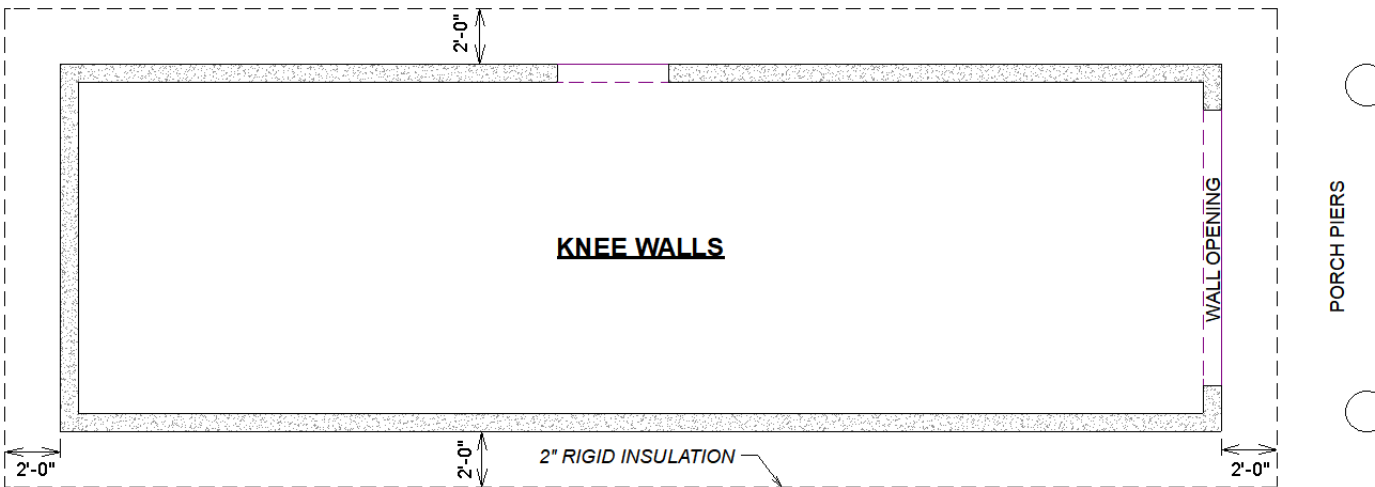
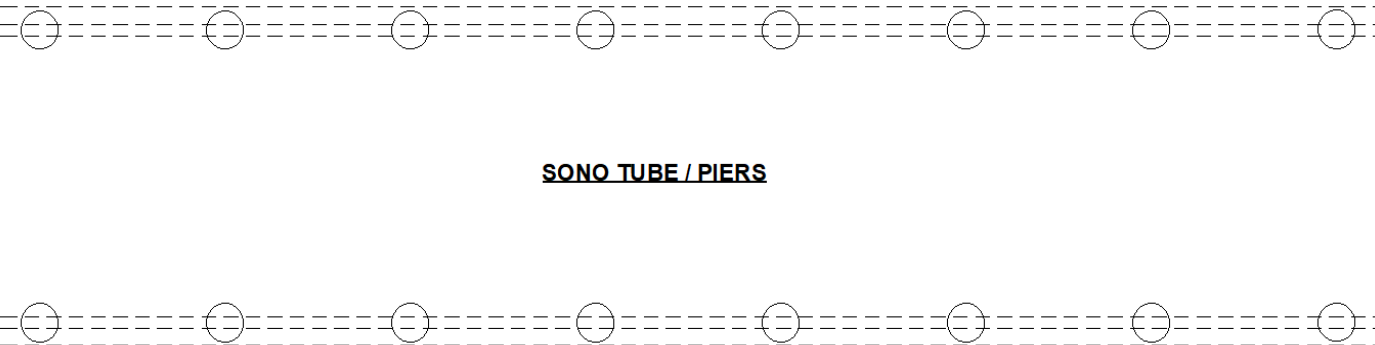
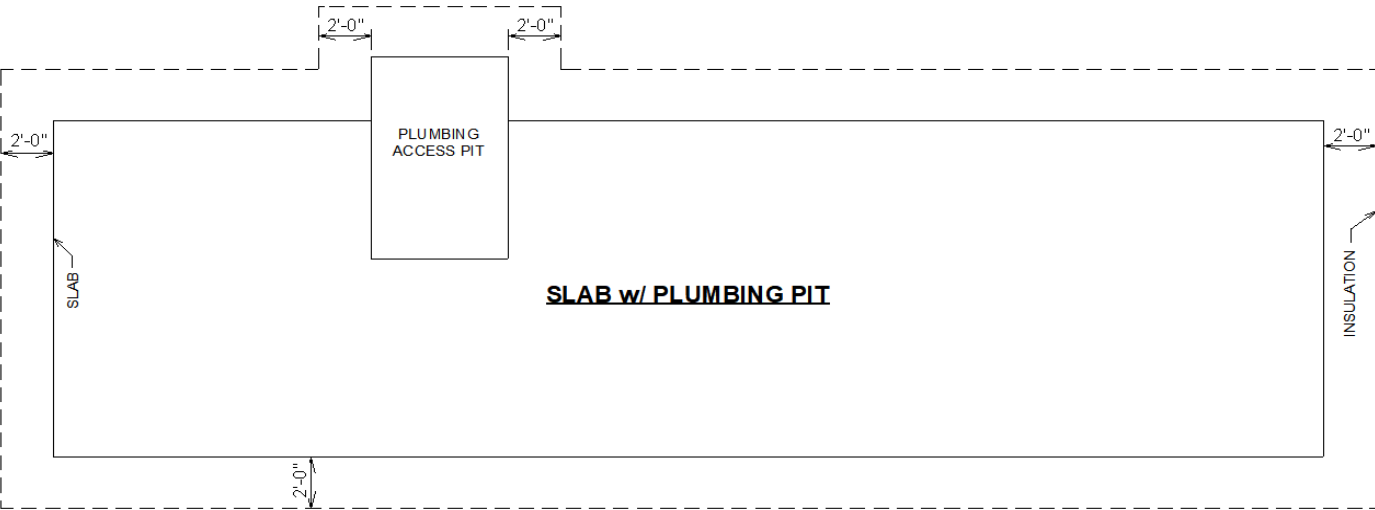
DATE:

1/30/2025

SCALE:

SHEET:

K-1



# Katahdin



~ 18x28 up to 24x36

~ 1 or more bedrooms

~ Loft (sleeping or storage)

~ Interior walls framed

~ Spacious Porch

~ Steep roof for snow shed



Phone: (207) 269-2800

Email: [sales@hillviewminibarns.com](mailto:sales@hillviewminibarns.com)

[www.hillviewminibarns.com](http://www.hillviewminibarns.com)

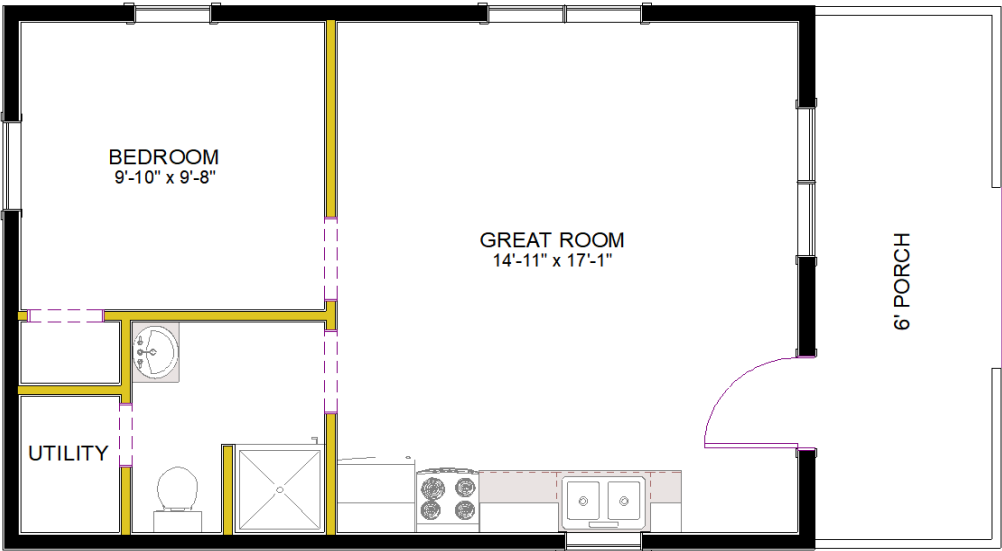
# Katahdin Construction Overview

## Standard Features

- ~ Exterior walls built with 2x6 studs (109" tall) spaced 16" O.C.
- ~ Sheathed w/ Smartside (your choice of 17 colors!)
- ~ 2x10 floor joists on three 6x6 pressure treated skids
- ~ 3/4" T&G Advantech subfloor
- ~ 80 PSF Roof built with Scissor Trusses spaced 24" O.C.
- ~ Roof sheathed w/ 5/8" Techshield and roofing paper
- ~ Lifetime architectural shingles
- ~ Windows are insulated vinyl in white
- ~ Door is 36" 9-lite, insulated, fiberglass in white
- ~ Interior walls rough framed w/ loft above
- ~ Shell only (no insulation, plumbing or electrical)
- ~ 12" Overhangs w/ 1x6 Fascia
- ~ 6' Deep porch w/ metal railing; width of the camp w/ Cathedral ceiling

## Additional Options

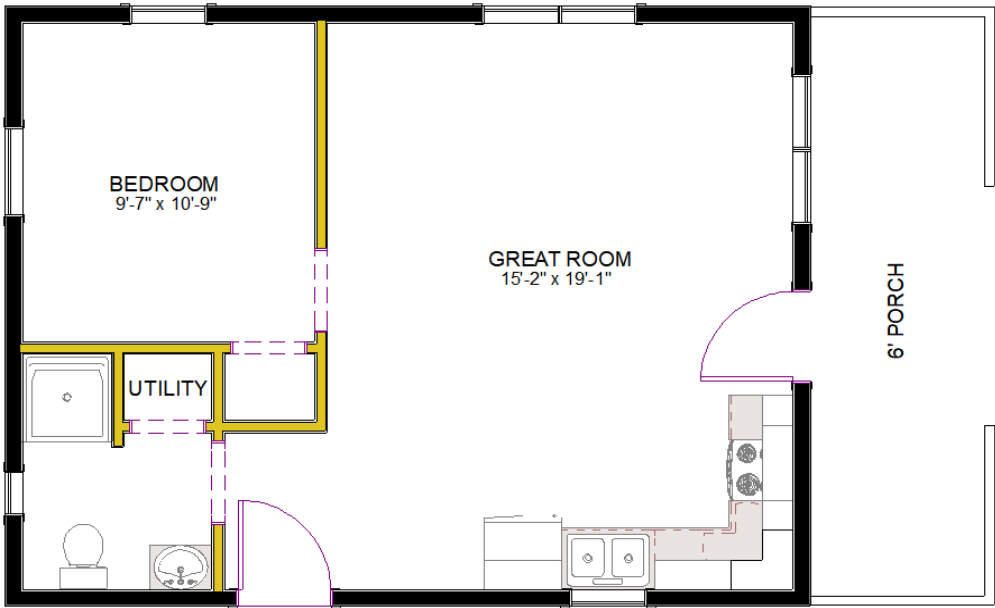
- ~ Siding upgrades including: painted Board & Batten, ship-lap pine, or "half log".
- ~ Metalbestos chimney
- ~ Windows in "Clay" or "Black" with or without grids
- ~ Painted entry door
- ~ Slider door
- ~ Corrugated Metal roof
- ~ Ice and Watershield
- ~ Changes to floor plan, window size/quantity



**18x32** **\$52,930**

468 sq. ft. Interior  
108 sq. ft. porch  
170 sq. ft. Loft

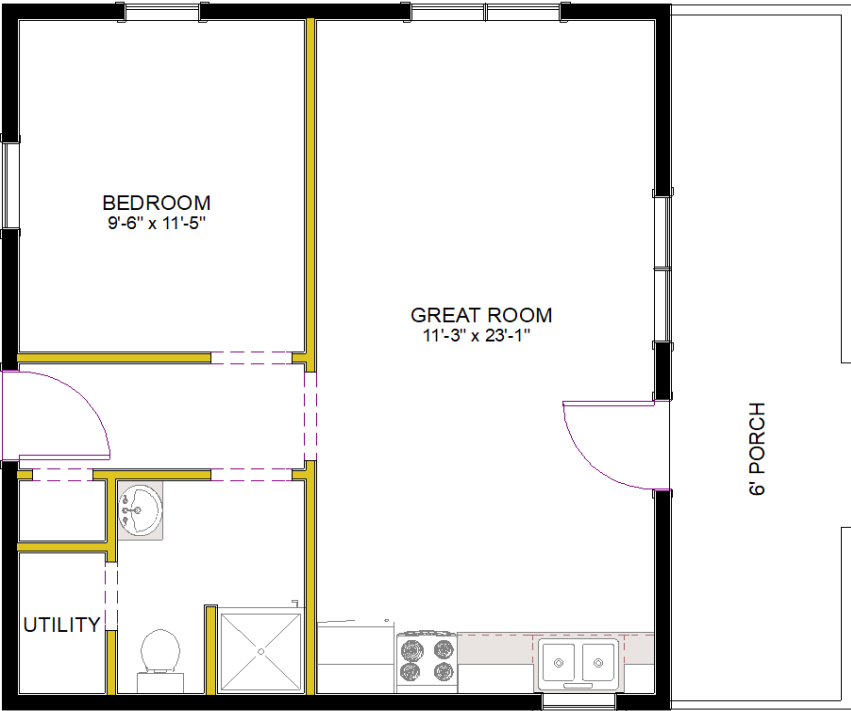
*Tax Included; mileage fee  
may apply*



**20x32** **\$58,245**

520 sq. ft. Interior  
120 sq. ft. porch  
215 sq. ft. Loft

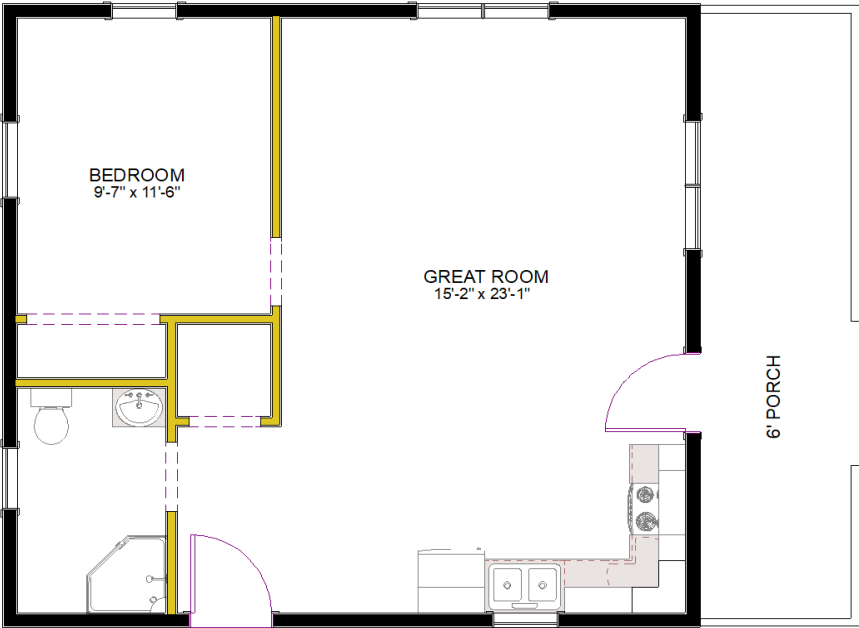
*Tax Included; mileage fee  
may apply*



**24x28** **\$60,760**

528 sq. ft. Interior  
108 sq. ft. porch  
275 sq. ft. Loft

*Tax Included; mileage fee  
may apply*



**24x32** **\$66,400**

624 sq. ft. Interior  
120 sq. ft. porch  
275 sq. ft. Loft

*Tax Included; mileage fee  
may apply*

# Rockwood



~ 22x26 w/ 6x12 porch

~ 1 bedroom

~ Laundry

~ Full Bath

~ Kitchen

~ Meets Residential Code



Phone: (207) 269-2800

Email: [sales@hillviewminibarns.com](mailto:sales@hillviewminibarns.com)

[www.hillviewminibarns.com](http://www.hillviewminibarns.com)



# Rockwood Construction Overview

## Standard Features

- ~ Floor constructed of 2x10 joists spaced at 16" o/c with ¾" OSB tongue & groove sub-floor
- ~ Walls constructed of 2x6 studs spaced at 16" o/c with 7/16" OSB wall sheathing and Tyvek® house wrap
- ~ Roof constructed of engineered trusses spaced at 24" o/c with 5/8" OSB sheathing
- ~ GAF® lifetime architectural shingles over synthetic roof underlayment w/ ice & water shield at eaves
- ~ Porch finished with 1" composite decking and metal railings (log railings optional)
- ~ Exterior log siding is 2x8 tongue and groove white pine, with 5-year urethane applied
- ~ Provia® insulated vinyl windows – double-hung/tilt with max efficiency triple pane Low-E/Argon
- ~ Storm door for single entry doors not covered by porch

## Insulation

- ~ Walls: R21 fiberglass insulation
- ~ Ceiling: R49 cellulose
- ~ Foundation: R14 closed cell spray foam, 2" thick on interior (Plus mileage fee, TBD per site location)

## Interior

- ~ Fusion Vinyl Plank flooring. Color choices: Hemlock or Hickory (sheet vinyl in bathroom)
- ~ Walls & ceilings finished in ¾" tongue & groove knotty-pine boards with 2-coat clear finish
- ~ Knotty-pine solid wood interior doors (v-groove arch top) with Schlage® lever latches
- ~ Wood closet shelving - adjustable height

## Kitchen

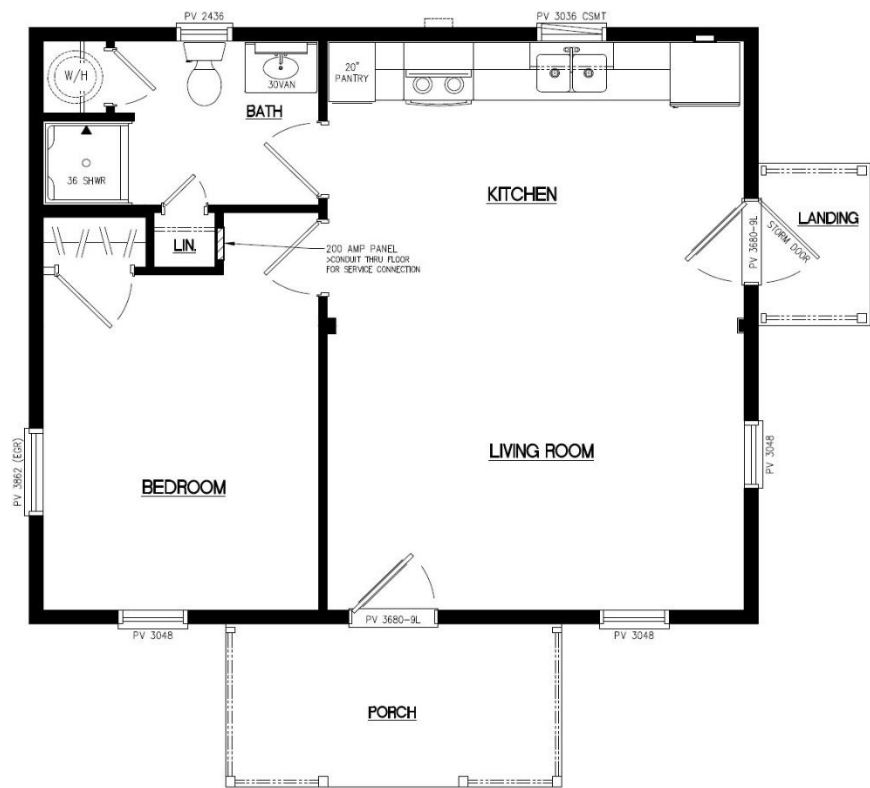
- ~ Solid Pine cabinetry with full-extension, soft-close doors & drawers
- ~ Wilsonart® laminate counter tops with decorative edge profiles (color & profile of your choice)
- ~ Under-mount double-bowl stainless sink and Moen® faucet with pull-down sprayer
- ~ Over-range microwave with thru-wall exhaust
- ~ Range electrical consists of (1) 240v & (1) 120v receptacle – for elect. range or a gas model

## Bathroom

- ~ Showers is 1-piece fiberglass unit – Biscuit color
- ~ Solid pine vanity cabinetry with cultured marble 1-piece top/sink – Biscuit color, swirled design
- ~ Rheem® water heater installed where shown on floor plan
- ~ Exhaust fan/light combination in ceiling, light over sink, and 20 amp GFCI receptacle at sink
- ~ Medicine cabinet at sink, plus amenities such as: toilet paper holder, hand towel ring, towel bar and robe hook

## Electrical

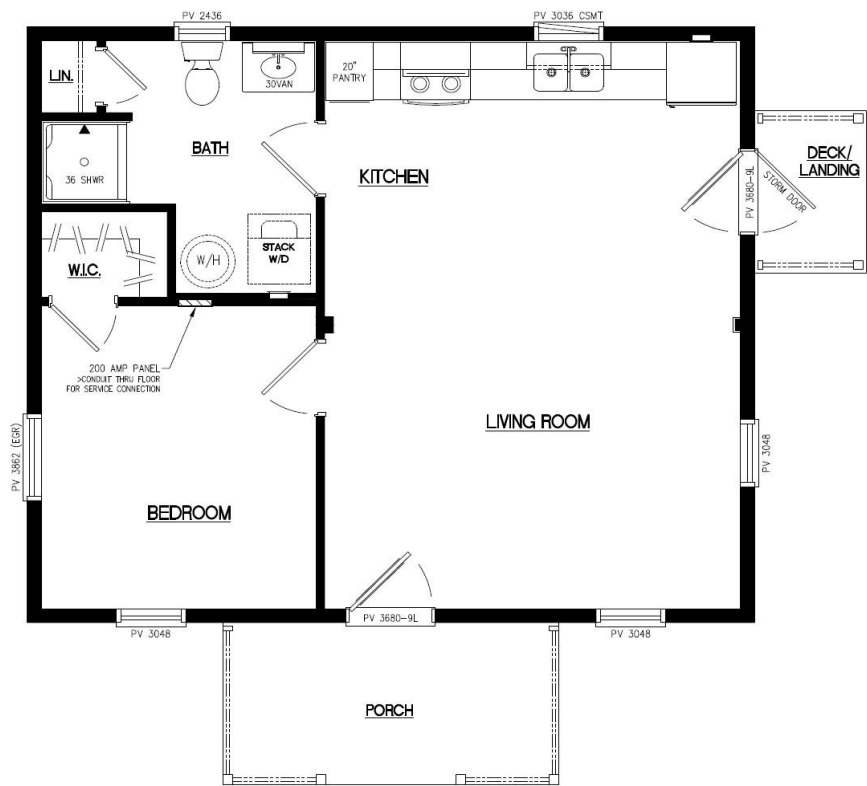
- ~ 200 amp Leviton panel box with breakers and surge protector installed



**22x26      \$154,970**

572 sq. ft. Interior  
72 sq. ft. porch

*Tax & Delivery Included*



**22x26      \$155,945**

572 sq. ft. Interior  
72 sq. ft. porch

*Tax & Delivery Included*