



# Recreational Camps



Acadia



Katahdin



Rockwood



Recreational  
Use



Hunting  
Cabin



Weekend  
Getaway



Vacation  
Rental



Bunkhouse



# Acadia



Cathedral Ceiling (14' wide only)



Interior Pine



13'4"x28' up  
to 14'x56'



1 or more  
Bedrooms



Laundry



Kitchen



Full Bath

# Construction Overview

## Standard Building Shell (13'4" Wide)

- ~ Width to outside of walls is 13'4" with 4" eave overhangs and 7" gable overhangs
- ~ Walls built with 2x4 studs spaced 16" O.C. sheathed with Smartside (choose from 17 colors!)
- ~ 2x8 floor joists on two 6x6 pressure treated skids and 3/4" tongue & groove Huber/Advantech floor
- ~ 90 PSF Roof with 2x6 rafters spaced 16" O.C. with 7/16" Techshield and roofing paper
- ~ 30 year architectural shingles or corrugated metal roofing
- ~ Windows are insulated vinyl in White
- ~ Entrance door is 36" 9-lite, insulated, fiberglass in White or 6' slider where shown on plan

## Standard Building Shell (14' Wide) *same as 13'4" wide with the following exceptions*

- ~ Width to outside of walls is 14' with 7" eave and gable overhangs (2x6 walls)
- ~ 2x10 floor joists on two 6x6 pressure treated skids and 3/4" tongue & groove Advantech subfloor
- ~ 90 PSF Roof with 2x8 rafters spaced 24" O.C. with 5/8" Techshield and roofing paper

## Insulation

- ~ Floor: R13 2" TUFF-R Thermosheath
- ~ Walls: 13'4"-R13 fiberglass batts; 14'-R21 rockwool
- ~ Ceiling: 13'4"-R19 fiberglass batts; 14'-R49 closed cell spray foam

## Interior

- ~ Fusion Vinyl Plank in "Summit"
- ~ Walls & ceilings finished in 3/4" tongue & groove knotty-pine boards with 3-coat clear finish
- ~ Knotty-pine solid wood interior doors (v-groove arch top) with Schlage lever latches

## Kitchen

- ~ Solid Maple cabinetry with full-extension, soft-close doors & drawers
- ~ Laminate Countertop (Oiled Soapstone)
- ~ Black Double-Basin Quartz Kitchen Sink (includes drain/strainer)
- ~ Over-range microwave (Black)
- ~ Empava 12", 2-burner tempered glass electric induction cooktop (OR 2 burner gas drop-in cooktop)

## Bathroom

- ~ 1-piece fiberglass shower (white)
- ~ Solid Maple vanity cabinetry with cultured marble 1-piece top/sink (White) & Medicine cabinet
- ~ RE160iP Rinnai Propane water heater, indoor tankless (OR AO Smith electric 30 gallon tank)
- ~ Exhaust fan/light combination in ceiling, light over sink and 20 amp GFCI receptacle at sink

## Electrical

- ~ 200 AMP panel box with breakers (100 AMP on camps 36' or shorter)
- ~ Completed by a licensed electrician to residential code

# Acadia Camp Permit Information

This document is to be given to local Code Enforcement Officer (hereafter "CEO") when applying for you permit.

## Plumbing:

- ~ Plumbing permit is obtained by the Etna CEO Randy Hall, the town in which these camps are constructed
- ~ Plumbing is completed by a licensed plumber
- ~ Etna CEO performs plumbing inspections
- ~ Pictures & Plumbing permit are available for your town's local plumbing inspector
- ~ An additional Plumbing permit will need to be obtained from the town for which the building is delivered to for the purpose of plumbing connections

*State Plumbing inspector, Michael Day, has met with Hill View and has confirmed that all plumbing is completed to code for the state of Maine*

## Electrical:

- ~ Electrical is completed by a licensed electrician
- ~ Electrical for each camp is inspected by licensed inspector, Kern Butler
- ~ Electrical certification is available for your town's local electrical inspector

*If your CEO has any questions, please refer them to Steve Meres at Hill View Mini Barns 207-269-2377*

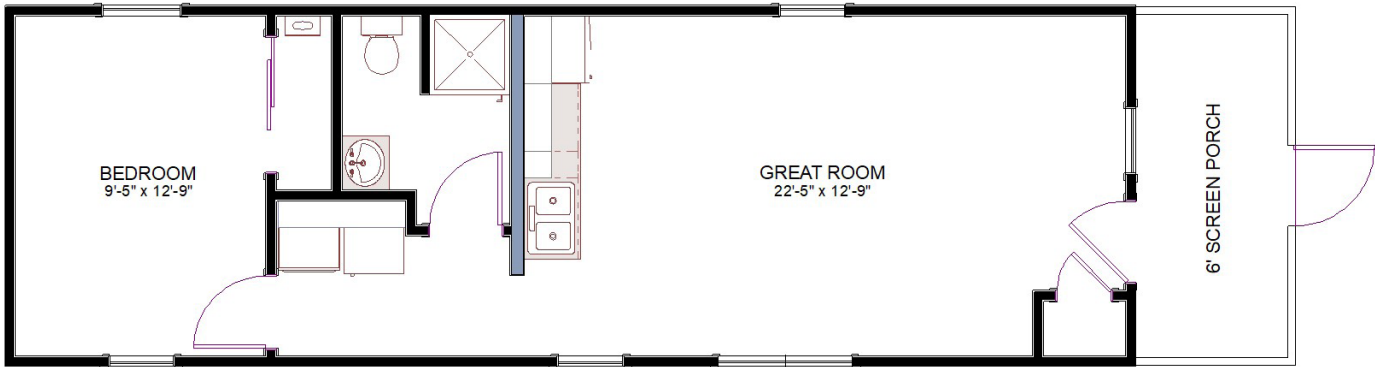




# Acadia with Front Porch

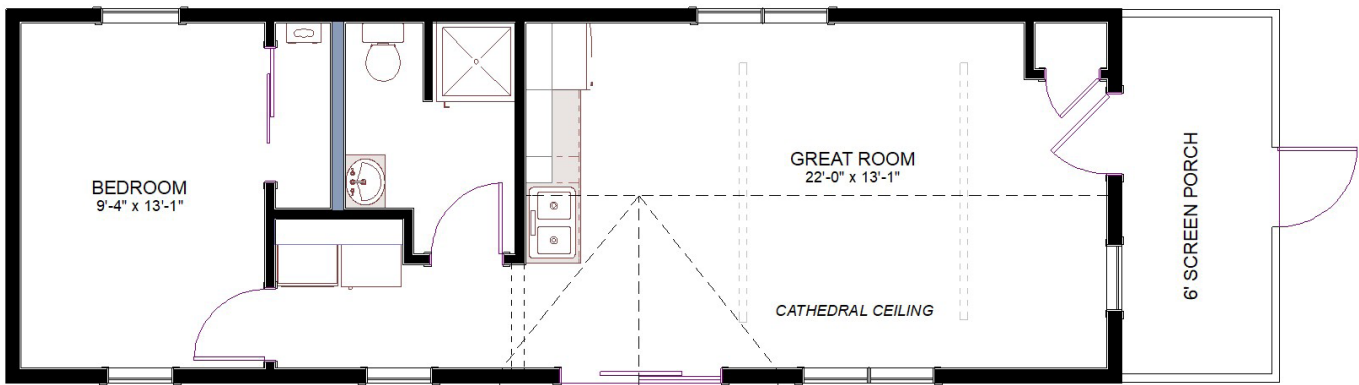
2026

13'4"x48 Plan Shown



	Finished	Shell		Finished	Shell
<u>13'4"x36</u>	<u>\$63,410</u>	<u>\$19,685</u>	<u>14x36</u>	<u>\$83,485</u>	<u>\$28,085</u>
<u>13'4"x40</u>	<u>\$71,675</u>	<u>\$21,540</u>	<u>14x40</u>	<u>\$93,035</u>	<u>\$31,120</u>
<u>13'4"x44</u>	<u>\$75,980</u>	<u>\$22,840</u>	<u>14x44</u>	<u>\$97,810</u>	<u>\$33,170</u>
<u>13'4"x48</u>	<u>\$79,870</u>	<u>\$24,180</u>	<u>14x48</u>	<u>\$109,585</u>	<u>\$39,610</u>
<u>13'4"x52</u>	<u>\$82,750</u>	<u>\$25,355</u>	<u>14x52</u>	<u>\$114,360</u>	<u>\$41,570</u>
<u>13'4"x56</u>	<u>\$85,675</u>	<u>\$26,645</u>	<u>14x56</u>	<u>\$119,280</u>	<u>\$43,680</u>

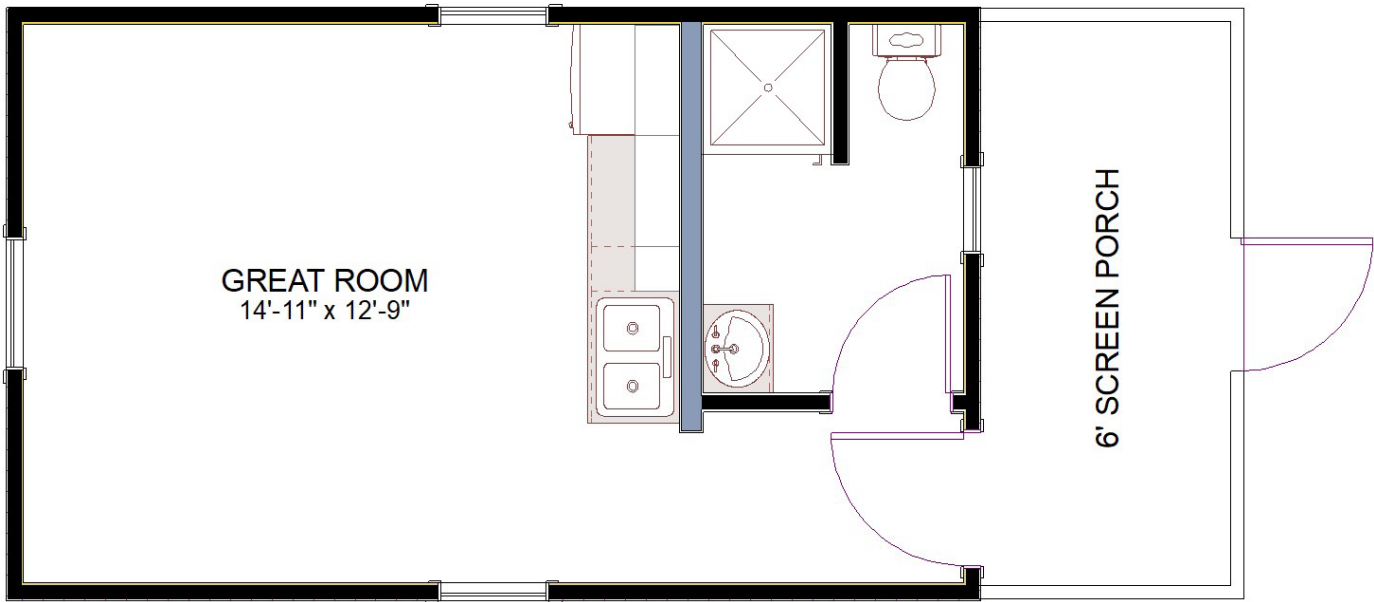
14x48 Plan Shown



# Acadia with Front Porch

2026

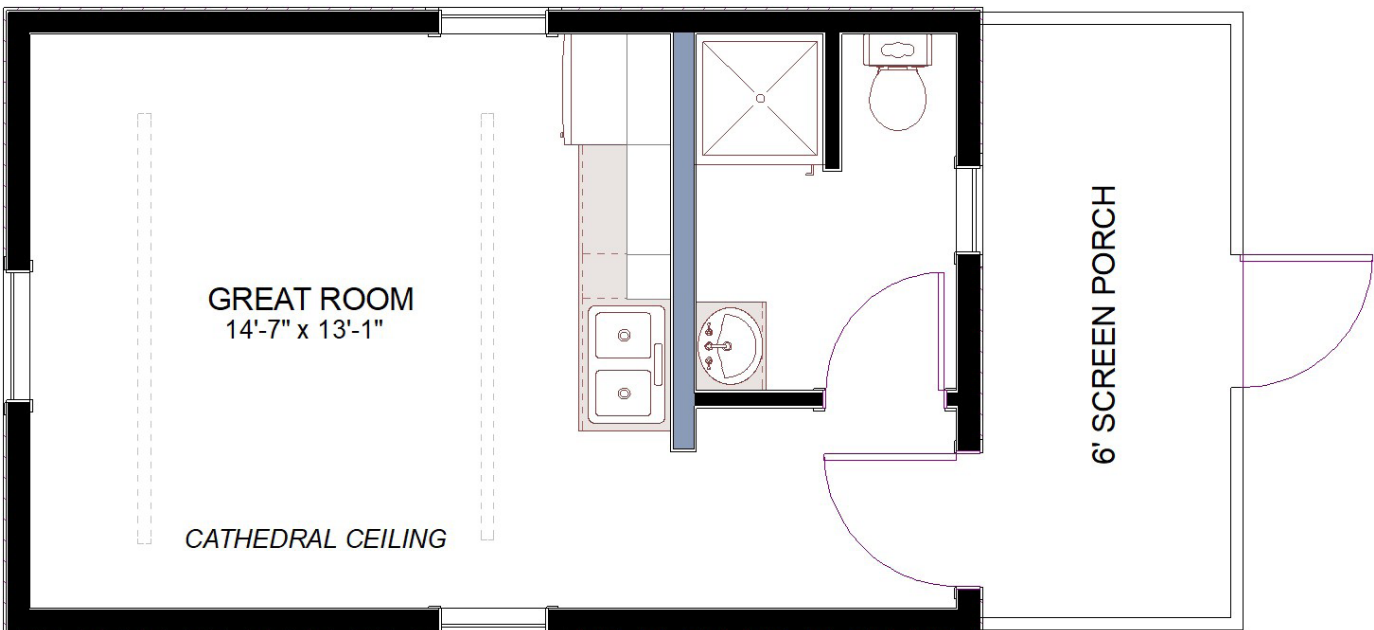
13'4"x28 Plan Shown



	Finished	Shell
13'4"x28	\$51,995	\$15,810

	Finished	Shell
14x28	\$65,045	\$20,670

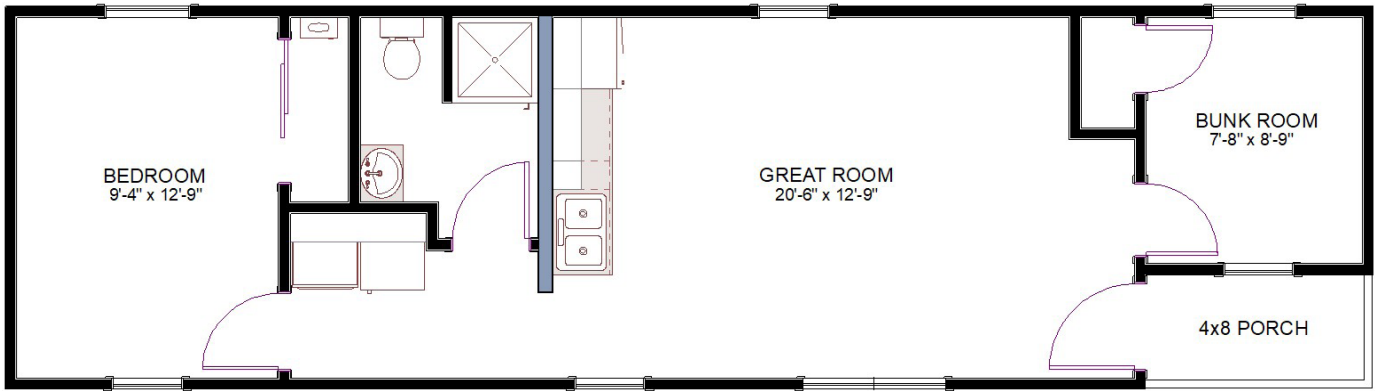
14x28 Plan Shown



# Acadia with Corner Porch & 2nd Bedroom

2026

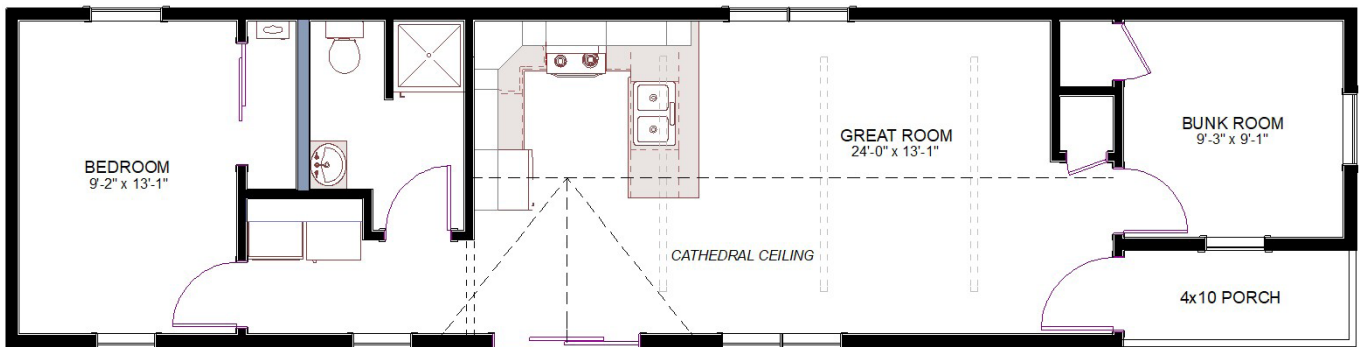
13'4"x48 Plan Shown



	Finished	Shell
13'4"x40	\$76,510	\$20,735
13'4"x44	\$80,035	\$22,475
13'4"x48	\$83,260	\$24,730
13'4"x52	\$86,380	\$25,375
13'4"x56	\$89,380	\$27,130

	Finished	Shell
14x40	\$95,385	\$27,625
14x44	\$100,605	\$30,115
14x48	\$111,545	\$36,320
14x52	\$115,730	\$37,970
14x56	\$120,685	\$40,200

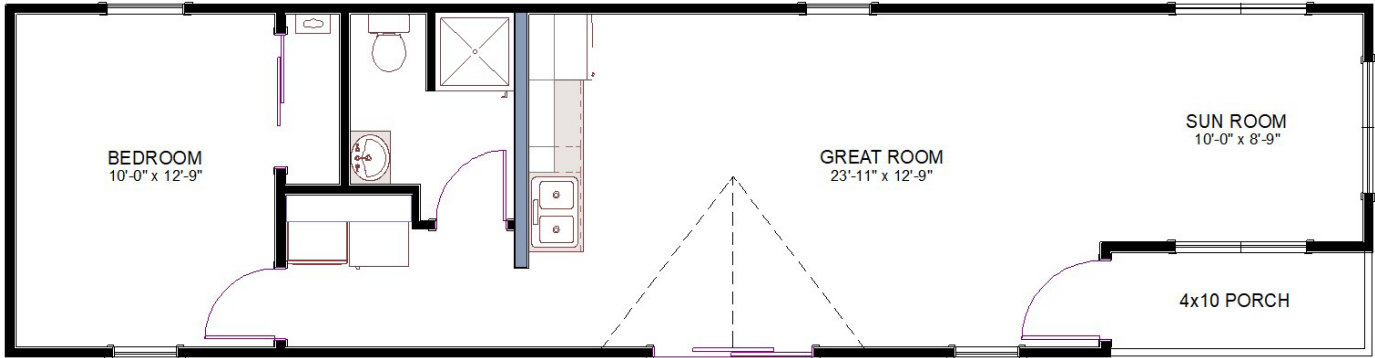
14x56 Plan Shown w/ optional kitchen D



# Acadia with Corner Porch & Sun Room

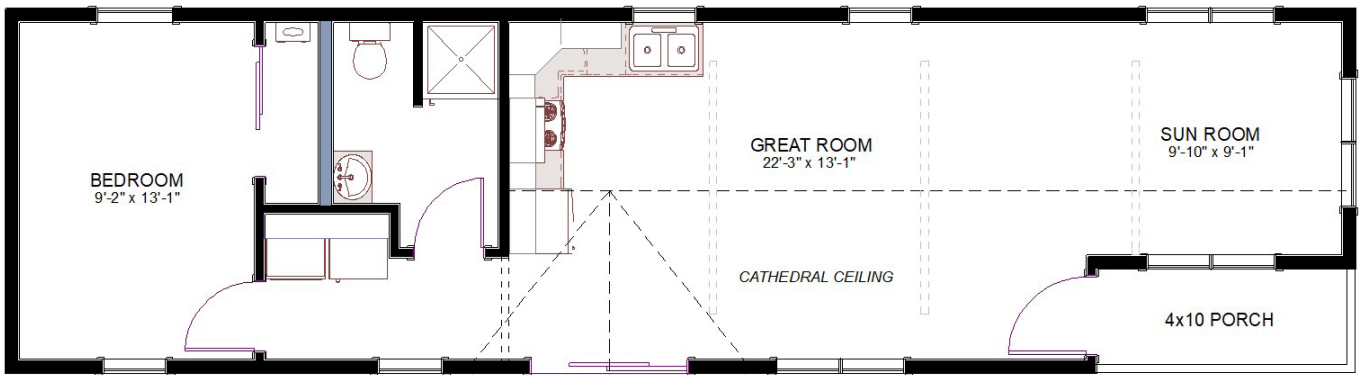
2026

13'4"x52 Plan Shown



	Finished	Shell		Finished	Shell
<u>13'4"x36</u>	<u>\$65,300</u>	<u>\$20,825</u>	<u>14x36</u>	<u>\$85,170</u>	<u>\$26,910</u>
<u>13'4"x40</u>	<u>\$72,975</u>	<u>\$22,240</u>	<u>14x40</u>	<u>\$90,220</u>	<u>\$27,725</u>
<u>13'4"x44</u>	<u>\$76,390</u>	<u>\$23,980</u>	<u>14x44</u>	<u>\$97,575</u>	<u>\$31,755</u>
<u>13'4"x48</u>	<u>\$82,910</u>	<u>\$28,190</u>	<u>14x48</u>	<u>\$107,145</u>	<u>\$37,040</u>
<u>13'4"x52</u>	<u>\$85,790</u>	<u>\$29,505</u>	<u>14x52</u>	<u>\$111,375</u>	<u>\$39,150</u>
<u>13'4"x56</u>	<u>\$89,085</u>	<u>\$31,165</u>	<u>14x56</u>	<u>\$117,145</u>	<u>\$41,675</u>

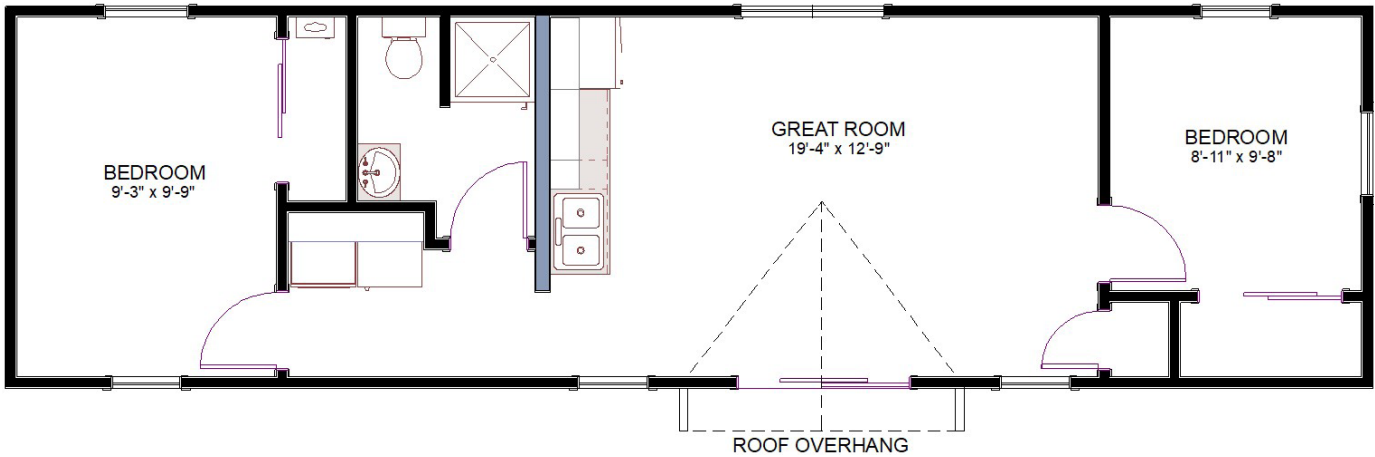
14x52 Plan Shown w/ optional kitchen C



# Acadia with Dormer Overhang

2026

13'4"x48 Plan Shown

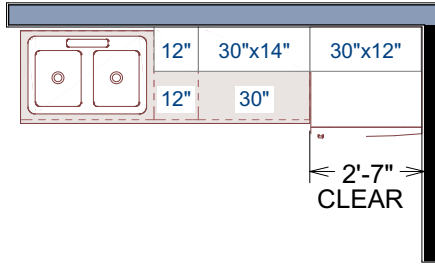


	Finished	Shell
13'4"x40	\$74,470	\$23,395
13'4"x44	\$82,420	\$23,640
13'4"x48	\$87,720	\$26,925
13'4"x52	\$90,605	\$28,175
13'4"x56	\$93,600	\$29,540

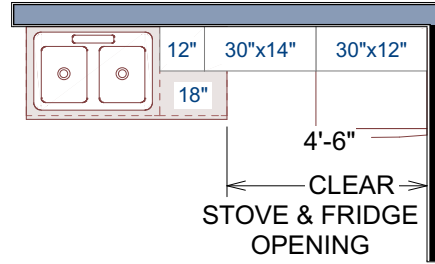


# Kitchen Options

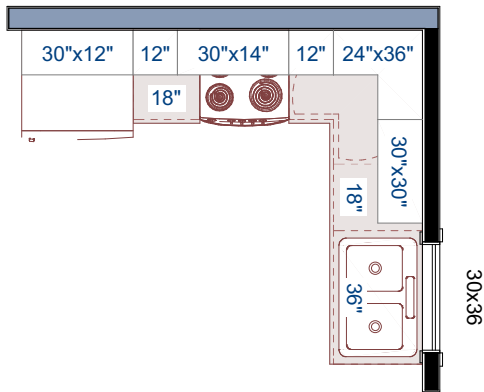
## KITCHEN 'A'



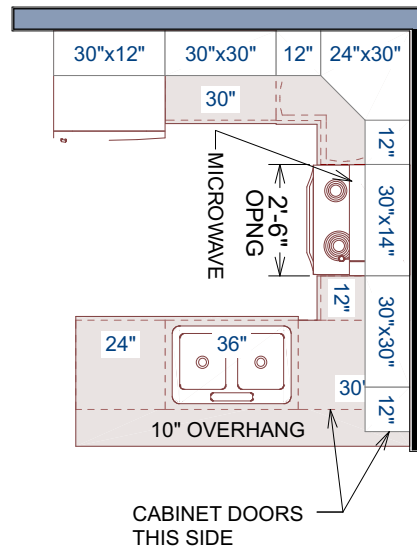
## KITCHEN 'B'



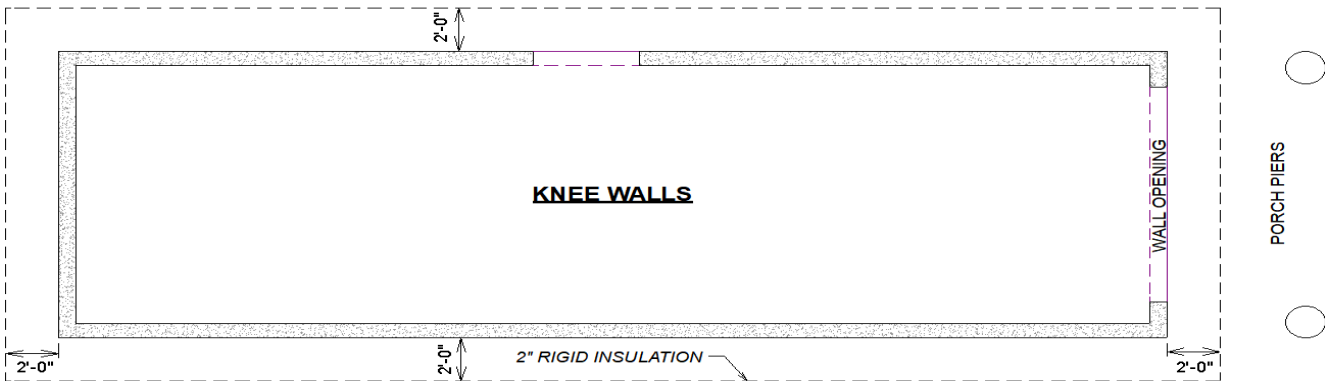
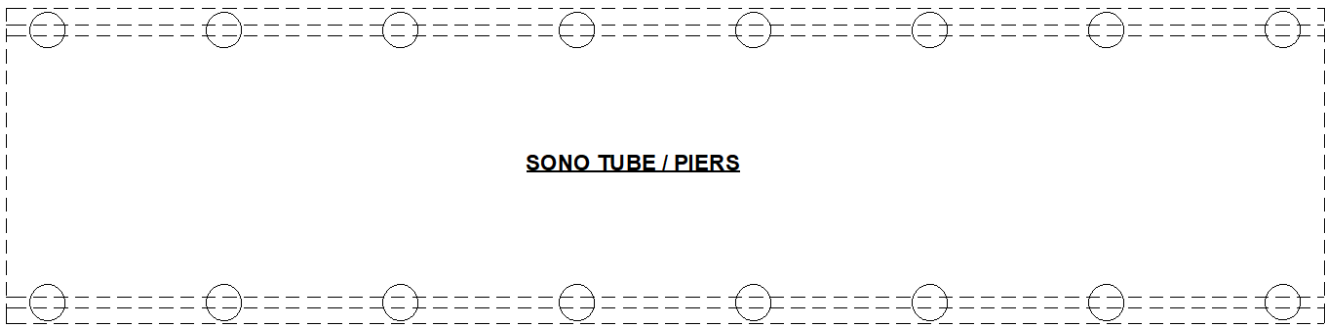
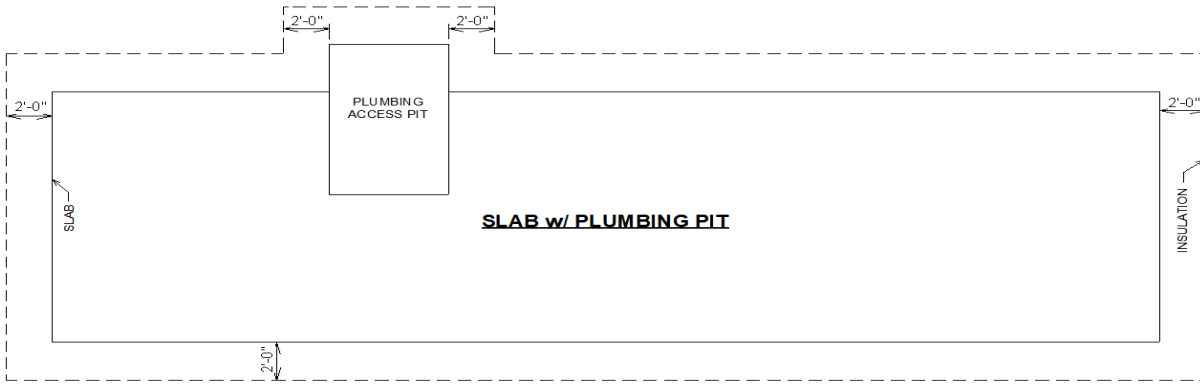
## KITCHEN 'C'



## KITCHEN 'D'



**\*\* NOTE: KITCHENS "C" & "D" MAY ONLY BE USED IN CAMPS THAT WILL HAVE FULL ACCESS BELOW THE FLOOR (SET ON PIERS OR WALLS); PLUMBING CONNECTIONS ARE NOT FEASIBLE FOR CAMPS SET DIRECTLY ON A SLAB \*\***





# Katahdin



Interior



18'x28' up  
to 28'x44'



1 or more  
Bedrooms



Spacious  
Porch



Interior  
Framed Walls

# Construction Overview

---

**\*\* NOTE: The Katahdin is available as a shell only; utilities, insulation and interior finish are DIY or by others \*\***

---

## Standard Features

- ~ Exterior walls built with 2x6 studs (109" tall) spaced 16" O.C.
- ~ Sheathed w/ Smartside (choose from 17 colors!)
- ~ 2x10 floor joists on three 6x6 pressure treated skids
- ~ 3/4" tongue & groove Huber/Advantech floor
- ~ 80 PSF Roof constructed with Scissor Trusses spaced 24" O.C.
- ~ Roof sheathed w/ 5/8" Techshield and roofing paper
- ~ Lifetime architectural shingles OR corrugated metal roofing
- ~ Windows are insulated vinyl in White
- ~ Door is 36" 9-lite, insulated, fiberglass in White
- ~ Interior walls rough framed w/ loft above
- ~ 12" Overhangs w/ 1x6 Fascia
- ~ 6' Deep porch w/ metal railing; width of the camp w/ cathedral ceiling

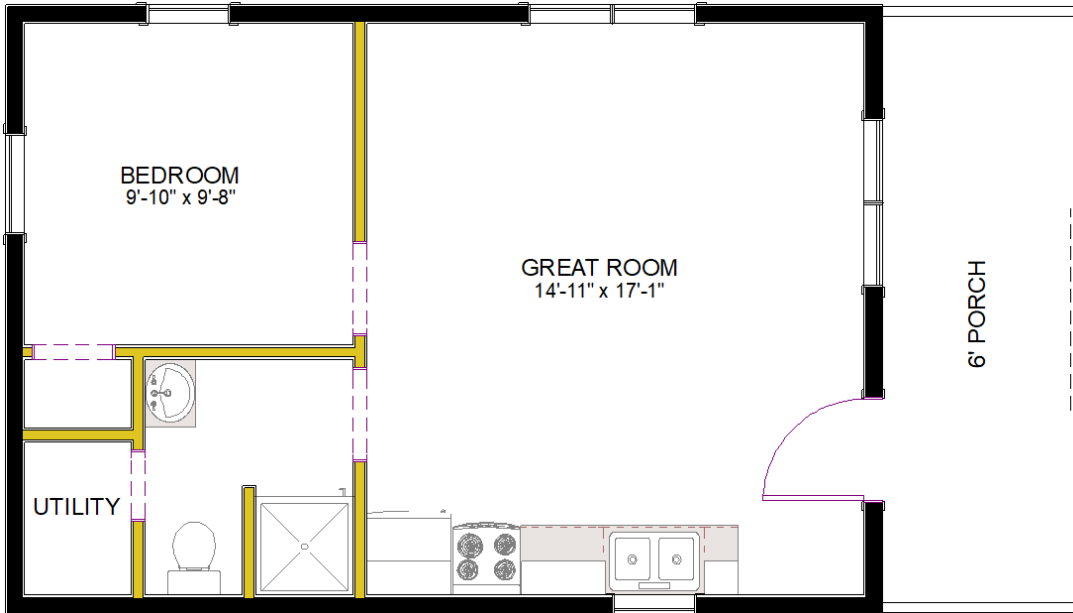
## Additional Options

- ~ Siding upgrades including: painted Board & Batten, Ship-lap, or "half log"
- ~ Metalbestos chimney
- ~ Windows in "Clay" or "Black" with or without grids
- ~ Painted entry door
- ~ 6' Sliding patio door
- ~ Ice and Watershield
- ~ Changes to floor plan, window size/quantity
- ~ Stairs

# Katahdin

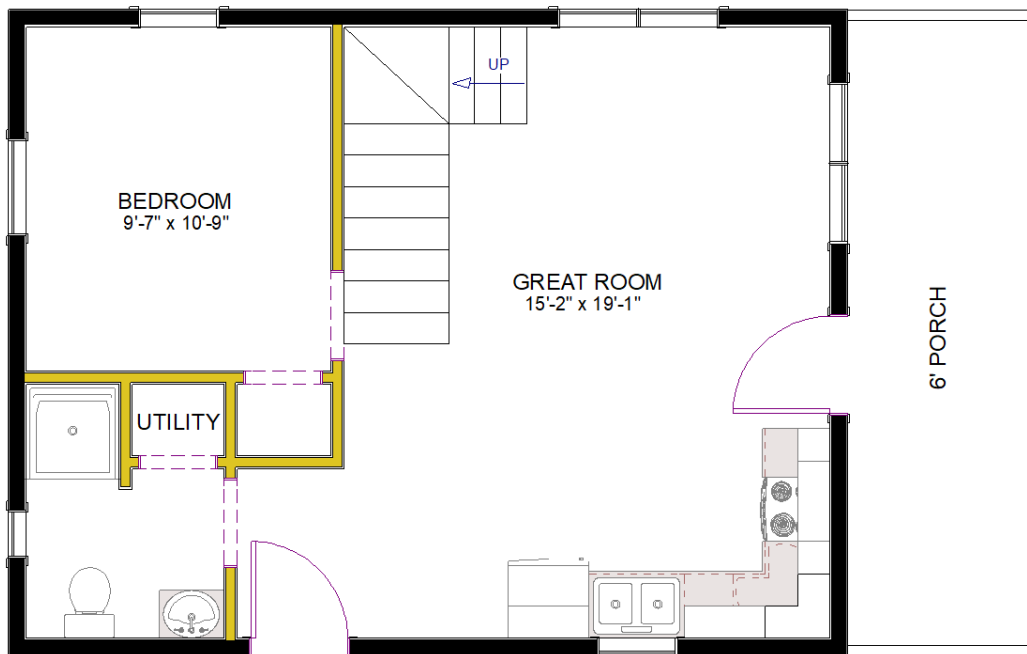
2026

18x32 Plan Shown



<u>18x28</u>	<u>\$55,135</u>
<u>18x32</u>	<u>\$59,375</u>
<u>18x36</u>	<u>\$65,135</u>

20x32 Plan Shown w/ options stairs

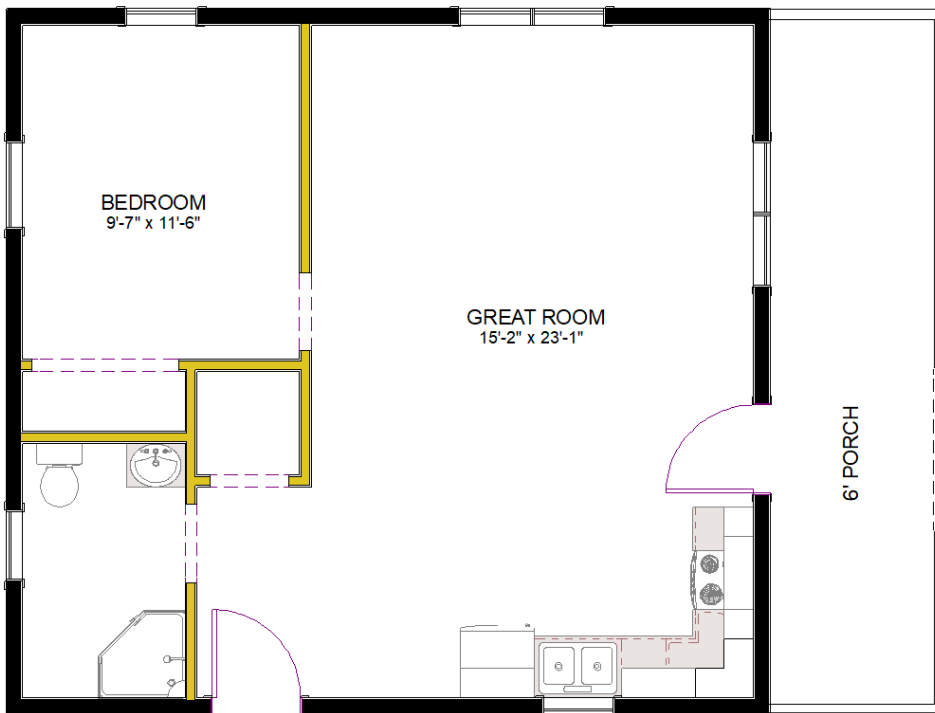


<u>20x28</u>	<u>\$59,475</u>
<u>20x32</u>	<u>\$65,820</u>

# Katahdin

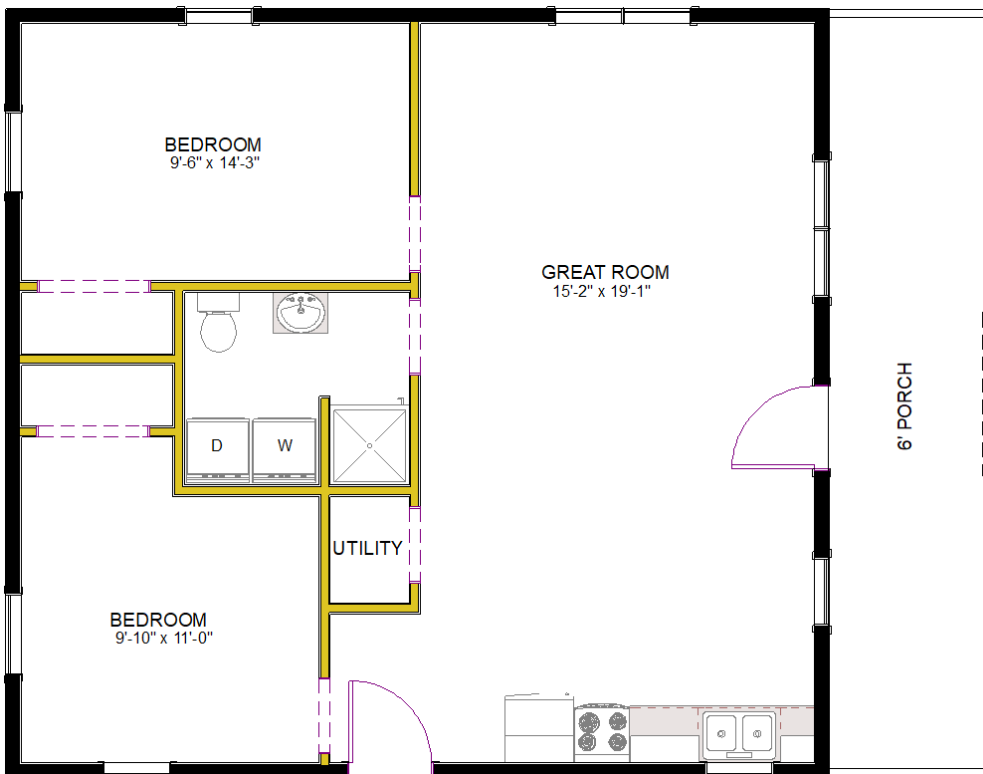
2026

24x32 Plan Shown



<u>24x28</u>	<u>\$70,640</u>
<u>24x32</u>	<u>\$77,115</u>
<u>24x36</u>	<u>\$83,745</u>
<u>24x40</u>	<u>\$95,120</u>

28x36 Plan Shown



<u>28x28</u>	<u>\$83,345</u>
<u>28x32</u>	<u>\$90,500</u>
<u>28x36</u>	<u>\$97,670</u>
<u>28x44</u>	<u>\$113,685</u>

# Rockwood



Meets Modular  
Code



1 Bedroom



Laundry



Kitchen



Full Bath

# Construction Overview

## Standard Features

- ~ Floor constructed with 2x10 joists spaced 16" O.C. with 3/4" OSB tongue & groove sub-floor
- ~ Walls constructed with 2x6 studs spaced 16" O.C. with 7/16" OSB sheathing and Tyvek housewrap
- ~ Roof constructed with engineered trusses spaced 24" O.C. with 5/8" OSB sheathing
- ~ GAF lifetime architectural shingles over synthetic roof underlayment with ice & watershield at eaves
- ~ Porch finished with 1" composite decking and metal railings (log railings optional)
- ~ Exterior log siding is 2x8 tongue and groove white pine with 5-year urethane applied
- ~ Provia insulated vinyl windows; double-hung with max efficiency triple pane Low-E/Argon
- ~ Storm door for single entry doors not covered by porch
- ~ Exterior steps with metal railings

## Insulation

- ~ Foundation: R14 closed cell spray foam, 2" thick on interior (pluss mileage fee, TBD per location)
- ~ Walls: R23 fiberglass batts (R29 optional)
- ~ Ceiling: R49 cellulose

## Interior

- ~ Fusion Vinyl Plank flooring; Color choices: Hemlock or Hickory (sheet vinyl in bathroom)
- ~ Walls & ceilings finished in 3/4" tongue & groove knotty-pine boards with 2-coat clear finish
- ~ Knotty-pine solid wood interior doors (v-groove arch top) with Schlage lever latches
- ~ Wood closet shelving - adjustable height

## Kitchen

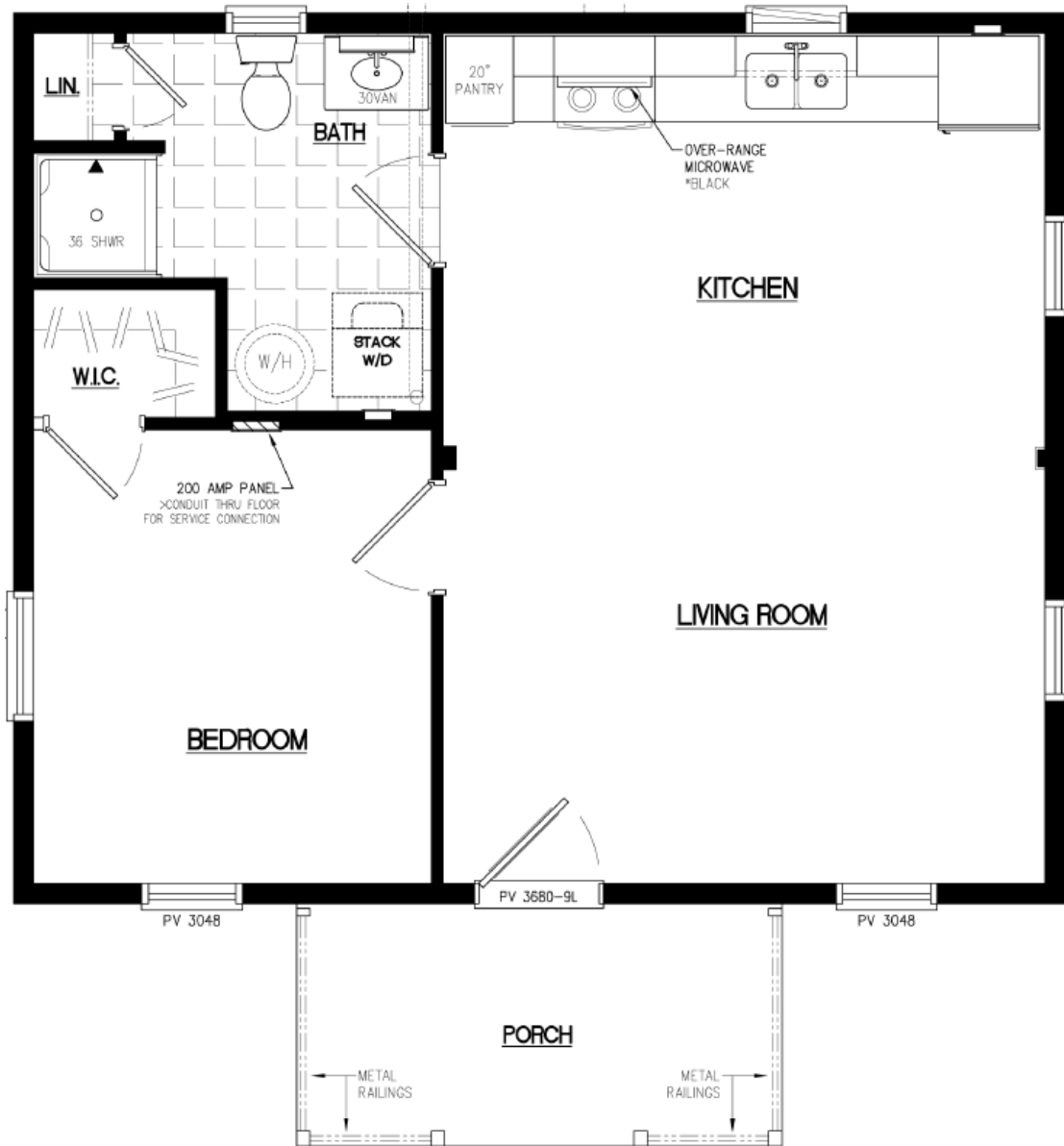
- ~ Alder, Maple or Hickory cabinetry with full-extension, soft-close doors and drawers
- ~ Wilsonart laminate counter tops with decorative edge profiles (color & profile of your choice)
- ~ Under-mount double-bowl stainless sink and Moen faucet with pull-down sprayer
- ~ Over-range microwave with thru-wall exhaust
- ~ Range electrical consists of (1) 240v & (1) 120v receptacle - for electric range or gas model

## Bathroom

- ~ Shower is 1-piece fiberglass unit
- ~ Solid wood vanity cabinetry with cultured marble 1-piece top/sink
- ~ Water heater as shown on plan to be installed by others
- ~ Exhaust fan/light combination in ceiling, light over sink and 20 amp GFCI receptacle at sink
- ~ Medicine cabinet at sink, plus amenities: toilet paper holder, hand towel ring, towel bar, robe hook

## Electrical

- ~ 200 AMP Leviton panel box with breakers and surge protector installed
- ~ Tamper-resistant receptacles spaced around rooms (less than 12' apart)
- ~ LED lighting indoor and outdoor (w/ dimmers at most interior lights)



**22x26    \$164,670**