



Recreational Camps



Acadia



Katahdin



Rockwood



Acadia



Cathedral Ceiling (14' wide only)



Interior Pine



13'4"x28' up
to 14'x56'



1 or more
Bedrooms



Laundry



Kitchen



Full Bath

Construction Overview

Standard Building Shell (13'4" Wide)

- ~ Width to outside of walls is 13'4" with 4" eave overhangs and 7" gable overhangs
- ~ Walls built with 2x4 studs spaced 16" O.C. sheathed with Smartside (choose from 17 colors!)
- ~ 2x8 floor joists on two 6x6 pressure treated skids and 3/4" tongue & groove Huber/Advantech floor
- ~ 90 PSF Roof with 2x6 rafters spaced 16" O.C. with 7/16" Techshield and roofing paper
- ~ 30 year architectural shingles or corrugated metal roofing
- ~ Windows are insulated vinyl in White
- ~ Entrance door is 36" 9-lite, insulated, fiberglass in White or 6' slider where shown on plan

Standard Building Shell (14' Wide) *same as 13'4" wide with the following exceptions*

- ~ Width to outside of walls is 14' with 7" eave and gable overhangs (2x6 walls)
- ~ 2x10 floor joists on two 6x6 pressure treated skids and 3/4" tongue & groove Advantech subfloor
- ~ 90 PSF Roof with 2x8 rafters spaced 24" O.C. with 5/8" Techshield and roofing paper

Insulation

- ~ Floor: R13 2" TUFF-R Thermosheath
- ~ Walls: 13'4"-R13 fiberglass batts; 14'-R21 rockwool
- ~ Ceiling: 13'4"-R19 fiberglass batts; 14'-R49 closed cell spray foam

Interior

- ~ Fusion Vinyl Plank in "Summit"
- ~ Walls & ceilings finished in 3/4" tongue & groove knotty-pine boards with 3-coat clear finish
- ~ Knotty-pine solid wood interior doors (v-groove arch top) with Schlage lever latches

Kitchen

- ~ Solid Maple cabinetry with full-extension, soft-close doors & drawers
- ~ Laminate Countertop (Oiled Soapstone)
- ~ Black Double-Basin Quartz Kitchen Sink (includes drain/strainer)
- ~ Over-range microwave (Black)
- ~ Empava 12", 2-burner tempered glass electric induction cooktop (OR 2 burner gas drop-in cooktop)

Bathroom

- ~ 1-piece fiberglass shower (white)
- ~ Solid Maple vanity cabinetry with cultured marble 1-piece top/sink (White) & Medicine cabinet
- ~ RE160iP Rinnai Propane water heater, indoor tankless (OR AO Smith electric 30 gallon tank)
- ~ Exhaust fan/light combination in ceiling, light over sink and 20 amp GFCI receptacle at sink

Electrical

- ~ 200 AMP panel box with breakers (100 AMP on camps 36' or shorter)
- ~ Completed by a licensed electrician to residential code

Acadia Camp Permit Information

This document is to be given to local Code Enforcement Officer (hereafter "CEO") when applying for you permit.

Plumbing:

- ~ Plumbing permit is obtained by the Etna CEO Randy Hall, the town in which these camps are constructed
- ~ Plumbing is completed by a licensed plumber
- ~ Etna CEO performs plumbing inspections
- ~ Pictures & Plumbing permit are available for your town's local plumbing inspector
- ~ An additional Plumbing permit will need to be obtained from the town for which the building is delivered to for the purpose of plumbing connections

State Plumbing inspector, Michael Day, has met with Hill View and has confirmed that all plumbing is completed to code for the state of Maine

Electrical:

- ~ Electrical is completed by a licensed electrician
- ~ Electrical for each camp is inspected by licensed inspector, Kern Butler
- ~ Electrical certification is available for your town's local electrical inspector

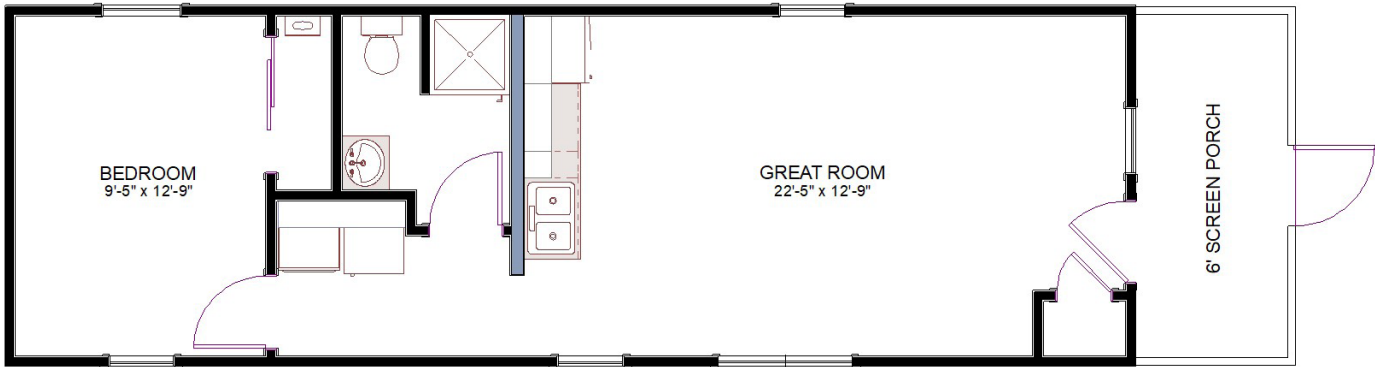
If your CEO has any questions, please refer them to Steve Meres at Hill View Mini Barns 207-269-2377



Acadia with Front Porch

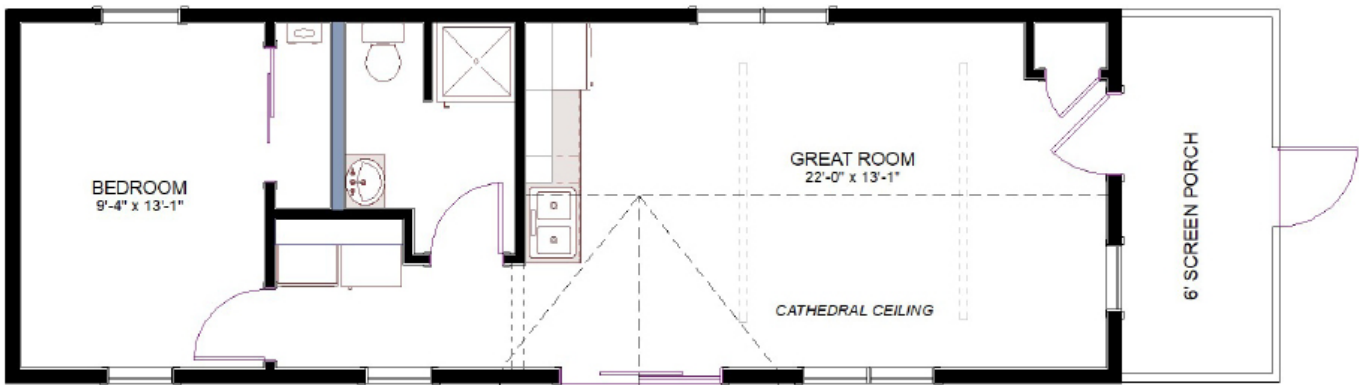
2026

13'4"x48 Plan Shown



| | Finished | Shell | | Finished | Shell |
|-----------------|-----------------|-----------------|--------------|------------------|-----------------|
| <u>13'4"x36</u> | <u>\$63,410</u> | <u>\$19,685</u> | <u>14x36</u> | <u>\$83,485</u> | <u>\$28,085</u> |
| <u>13'4"x40</u> | <u>\$71,675</u> | <u>\$21,540</u> | <u>14x40</u> | <u>\$93,035</u> | <u>\$31,120</u> |
| <u>13'4"x44</u> | <u>\$75,980</u> | <u>\$22,840</u> | <u>14x44</u> | <u>\$97,810</u> | <u>\$33,170</u> |
| <u>13'4"x48</u> | <u>\$79,870</u> | <u>\$24,180</u> | <u>14x48</u> | <u>\$109,585</u> | <u>\$39,610</u> |
| <u>13'4"x52</u> | <u>\$82,750</u> | <u>\$25,355</u> | <u>14x52</u> | <u>\$114,360</u> | <u>\$41,570</u> |
| <u>13'4"x56</u> | <u>\$85,675</u> | <u>\$26,645</u> | <u>14x56</u> | <u>\$119,280</u> | <u>\$43,680</u> |

14x48 Plan Shown



Acadia with Front Porch

2026

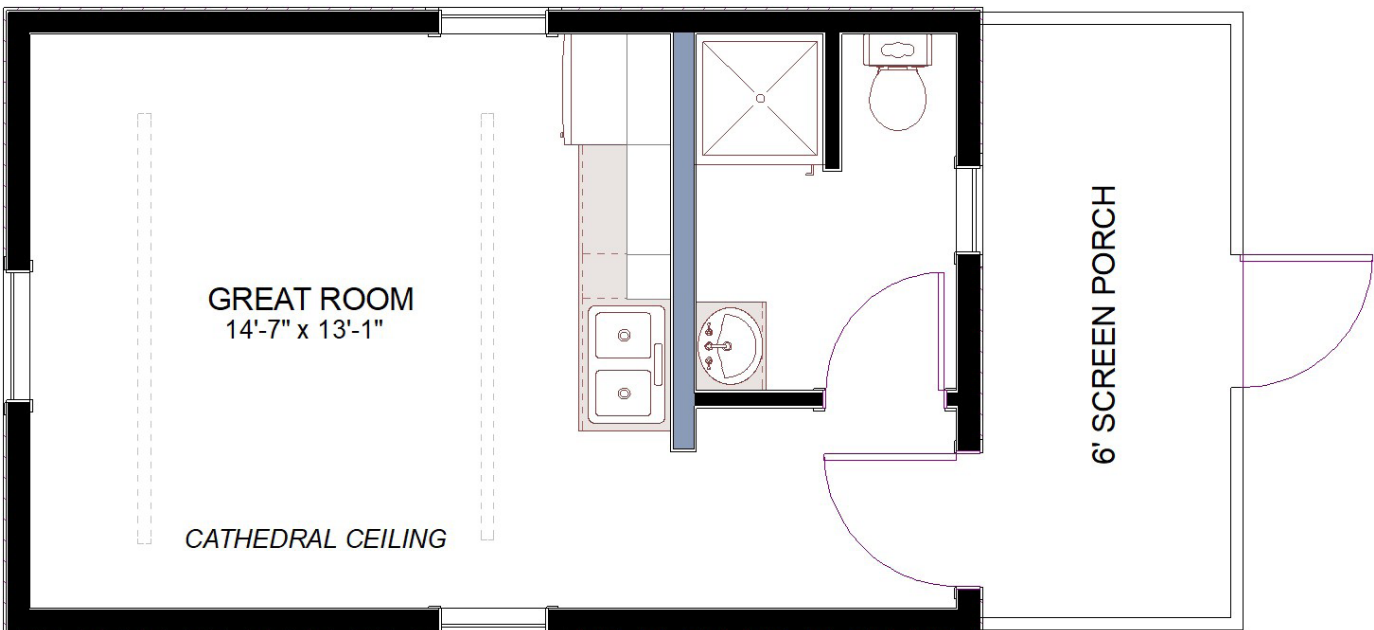
13'4"x28 Plan Shown



| | Finished | Shell |
|----------|----------|----------|
| 13'4"x28 | \$51,995 | \$15,810 |

| | Finished | Shell |
|-------|----------|----------|
| 14x28 | \$65,045 | \$20,670 |

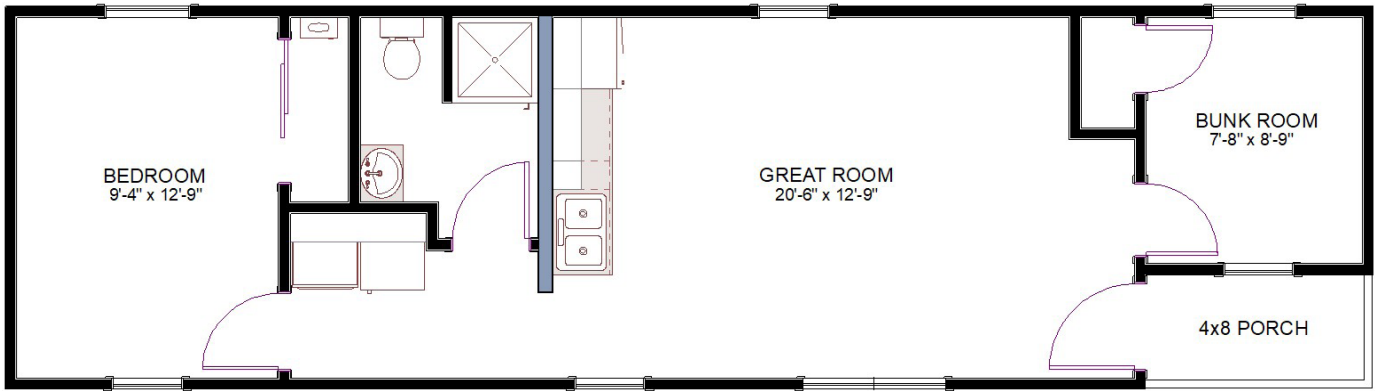
14x28 Plan Shown



Acadia with Corner Porch & 2nd Bedroom

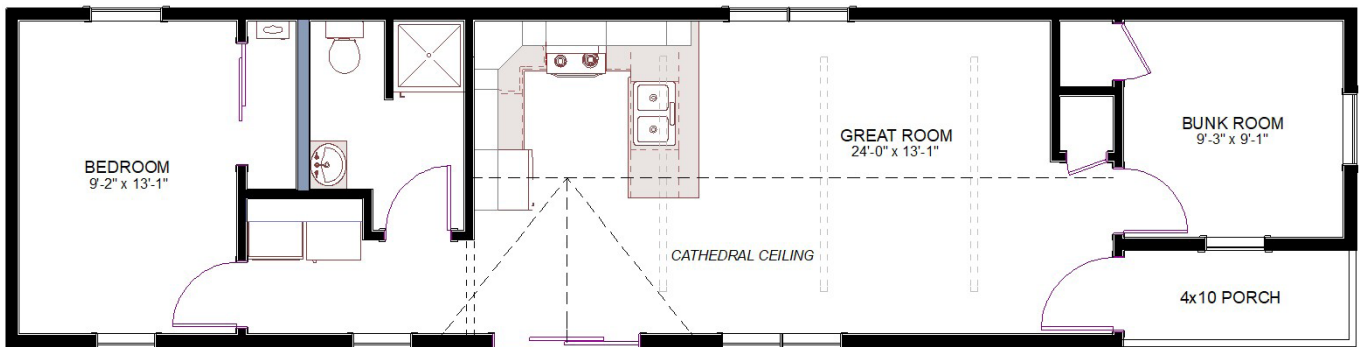
2026

13'4"x48 Plan Shown



| | Finished | Shell | | Finished | Shell |
|-----------------|-----------------|-----------------|--------------|------------------|-----------------|
| 13'4"x40 | \$76,510 | \$20,735 | 14x40 | \$95,385 | \$27,625 |
| 13'4"x44 | \$80,035 | \$22,475 | 14x44 | \$100,605 | \$30,115 |
| 13'4"x48 | \$83,260 | \$24,730 | 14x48 | \$111,545 | \$36,320 |
| 13'4"x52 | \$86,380 | \$25,375 | 14x52 | \$115,730 | \$37,970 |
| 13'4"x56 | \$89,380 | \$27,130 | 14x56 | \$120,685 | \$40,200 |

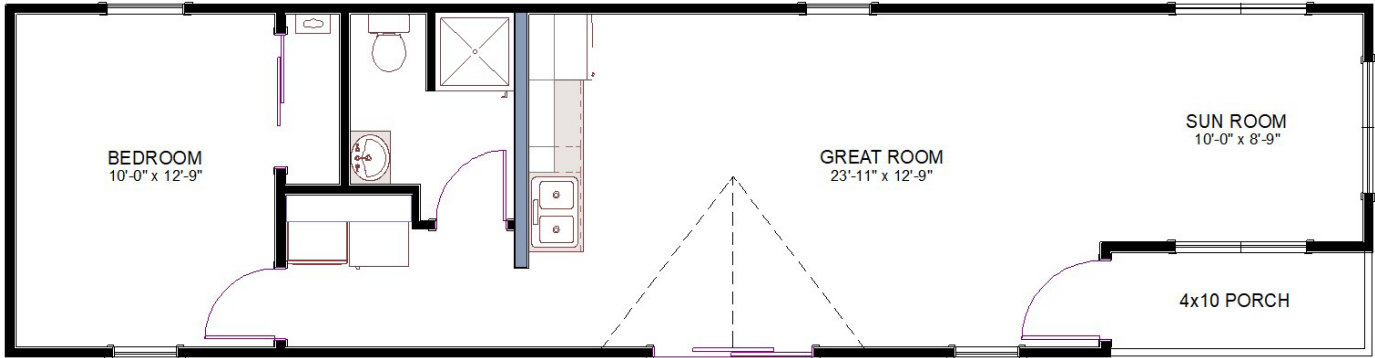
14x56 Plan Shown w/ optional kitchen D



Acadia with Corner Porch & Sun Room

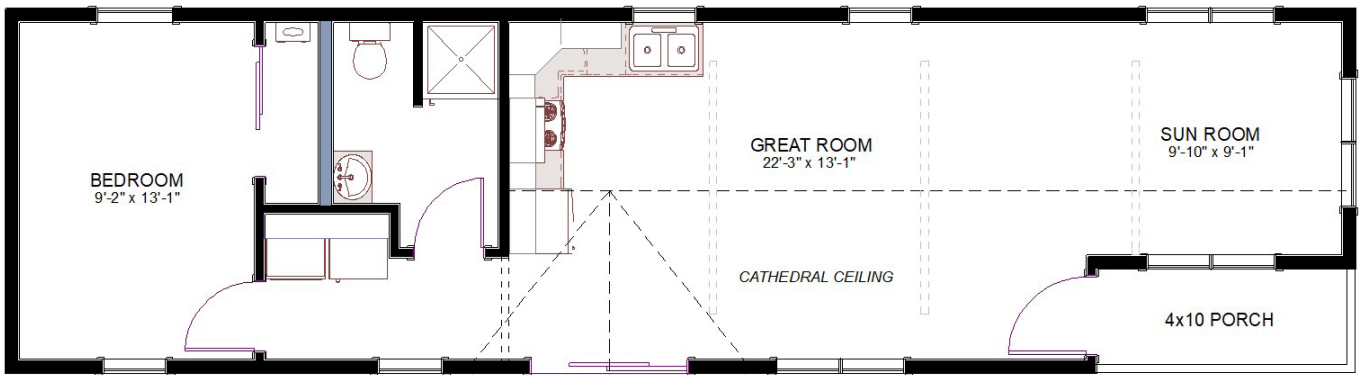
2026

13'4"x52 Plan Shown



| | Finished | Shell | | Finished | Shell |
|-----------------|-----------------|-----------------|--------------|------------------|-----------------|
| <u>13'4"x36</u> | <u>\$65,300</u> | <u>\$20,825</u> | <u>14x36</u> | <u>\$85,170</u> | <u>\$26,910</u> |
| <u>13'4"x40</u> | <u>\$72,975</u> | <u>\$22,240</u> | <u>14x40</u> | <u>\$90,220</u> | <u>\$27,725</u> |
| <u>13'4"x44</u> | <u>\$76,390</u> | <u>\$23,980</u> | <u>14x44</u> | <u>\$97,575</u> | <u>\$31,755</u> |
| <u>13'4"x48</u> | <u>\$82,910</u> | <u>\$28,190</u> | <u>14x48</u> | <u>\$107,145</u> | <u>\$37,040</u> |
| <u>13'4"x52</u> | <u>\$85,790</u> | <u>\$29,505</u> | <u>14x52</u> | <u>\$111,375</u> | <u>\$39,150</u> |
| <u>13'4"x56</u> | <u>\$89,085</u> | <u>\$31,165</u> | <u>14x56</u> | <u>\$117,145</u> | <u>\$41,675</u> |

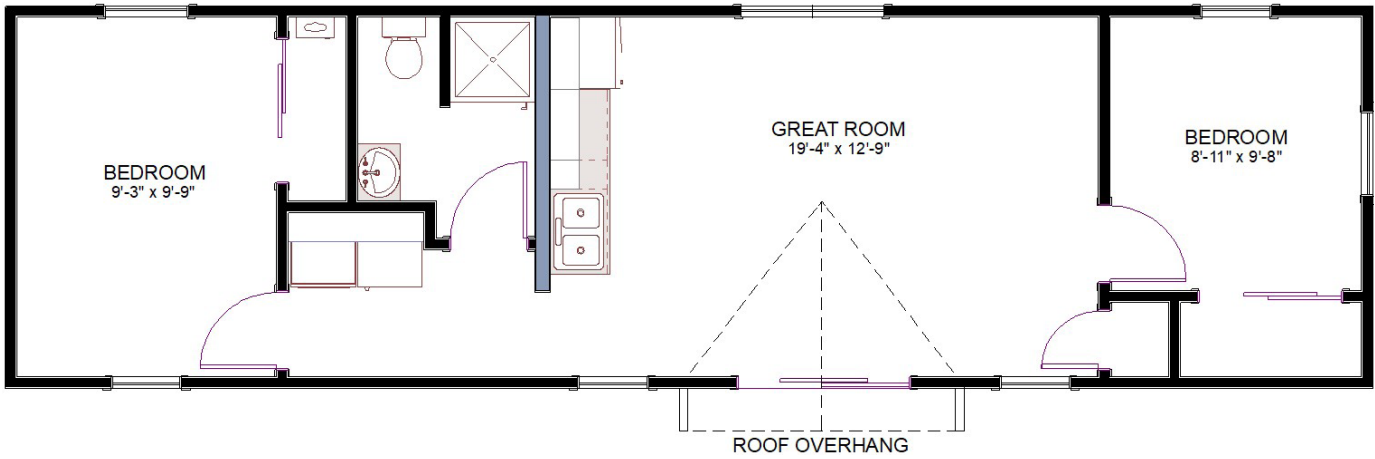
14x52 Plan Shown w/ optional kitchen C



Acadia with Dormer Overhang

2026

13'4"x48 Plan Shown

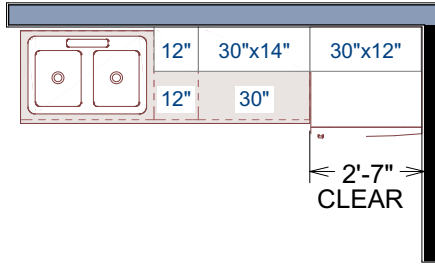


| | Finished | Shell |
|----------|----------|----------|
| 13'4"x40 | \$74,470 | \$23,395 |
| 13'4"x44 | \$82,420 | \$23,640 |
| 13'4"x48 | \$87,720 | \$26,925 |
| 13'4"x52 | \$90,605 | \$28,175 |
| 13'4"x56 | \$93,600 | \$29,540 |

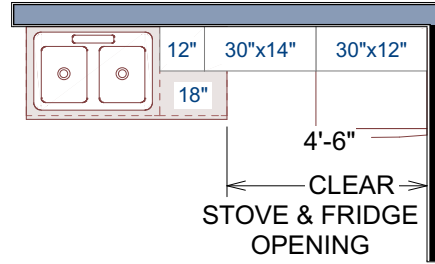


Kitchen Options

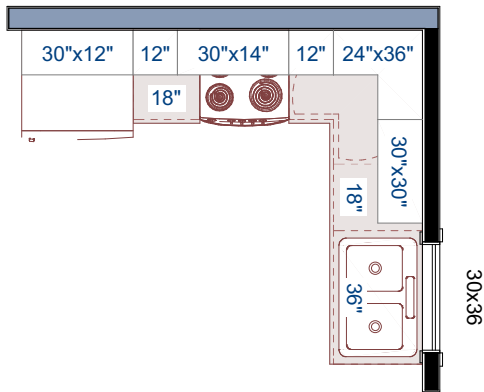
KITCHEN 'A'



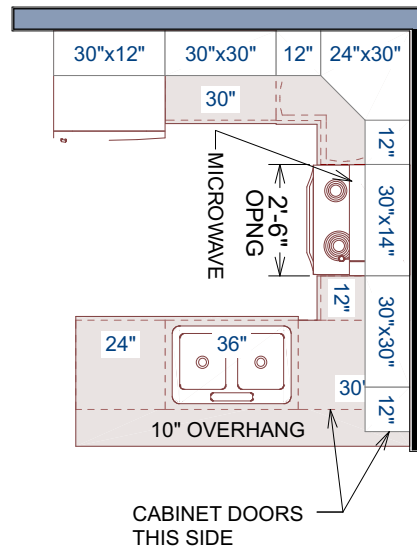
KITCHEN 'B'



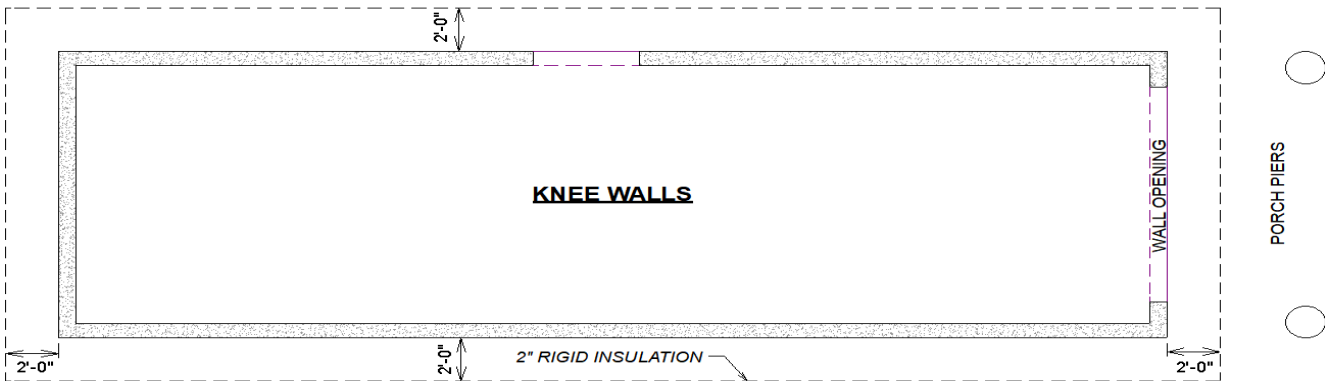
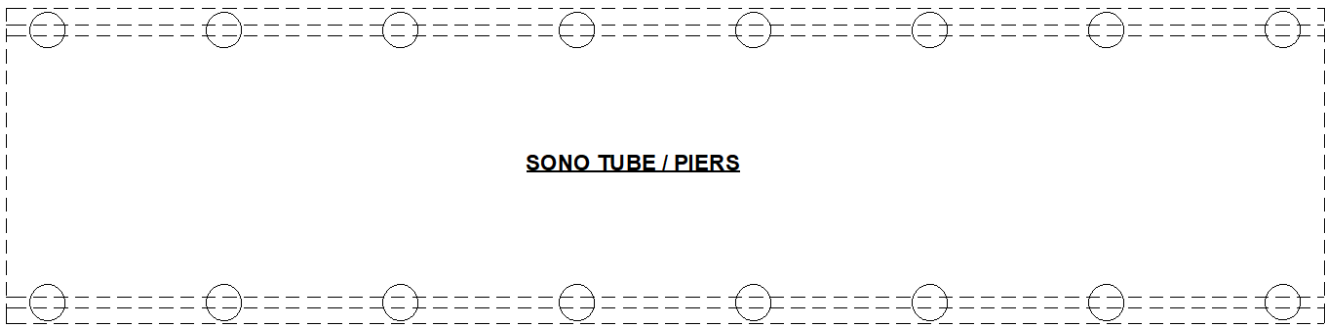
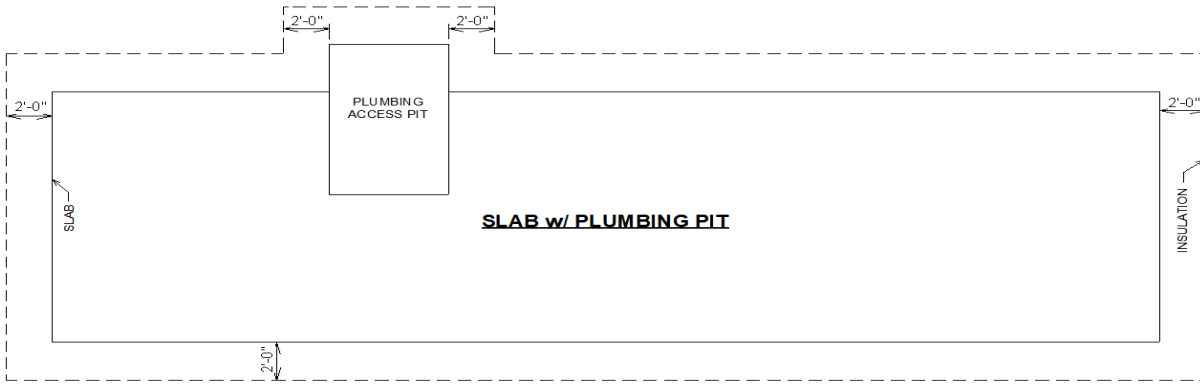
KITCHEN 'C'



KITCHEN 'D'



**** NOTE: KITCHENS "C" & "D" MAY ONLY BE USED IN CAMPS THAT WILL HAVE FULL ACCESS BELOW THE FLOOR (SET ON PIERS OR WALLS); PLUMBING CONNECTIONS ARE NOT FEASIBLE FOR CAMPS SET DIRECTLY ON A SLAB ****



Katahdin



Interior



18'x28' up
to 28'x44'



Trapezoid
windows



Spacious
Porch



DIY interior

Construction Overview

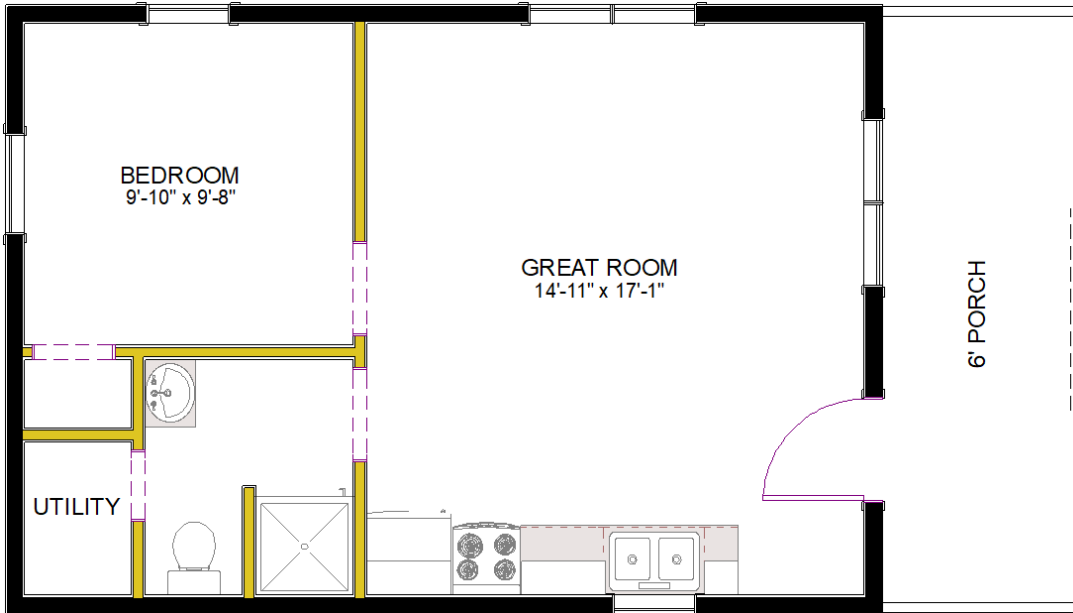
**** NOTE: The Katahdin is available as a shell only; utilities, insulation and interior are DIY or by others ****

Standard Features

- ~ Exterior walls built with 2x6 studs (109" tall) spaced 16" O.C.
- ~ Sheathed w/ Smartside (choose from 17 colors!)
- ~ 2x10 floor joists on three 6x6 pressure treated skids
- ~ 3/4" tongue & groove Huber/Advantech floor
- ~ 80 PSF Roof constructed with Scissor Trusses spaced 24" O.C.
- ~ Roof sheathed w/ 5/8" Techshield and roofing paper
- ~ Lifetime architectural shingles OR corrugated metal roofing
- ~ Windows are insulated vinyl in White
- ~ Door is 36" 9-lite, insulated, fiberglass in White
- ~ 12" Overhangs w/ 1x6 Fascia
- ~ 6' Deep porch w/ metal railing; width of the camp w/ cathedral ceiling

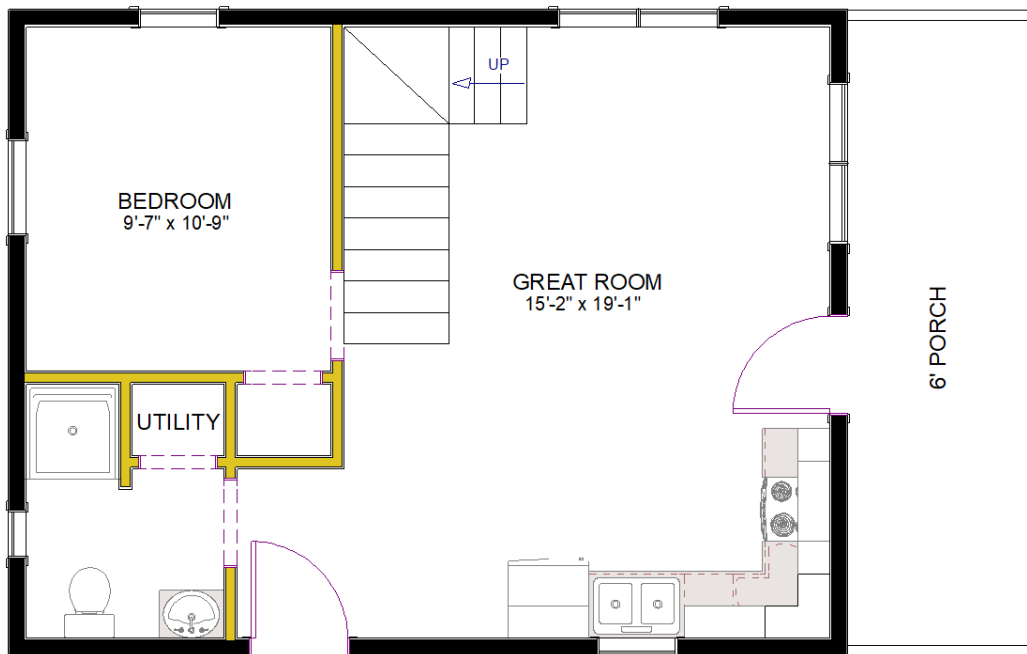
Additional Options

- ~ Siding upgrades including: painted Board & Batten, Ship-lap, or "half log"
- ~ Metalbestos chimney
- ~ Windows in "Clay" or "Black" with or without grids
- ~ Painted entry door
- ~ 6' Sliding patio door
- ~ Ice and Watershield
- ~ Changes to window size/quantity



| | |
|--------------|-----------------|
| 18x28 | \$55,135 |
| 18x32 | \$59,375 |
| 18x36 | \$65,135 |

20x32 Plan Shown w/ options stairs

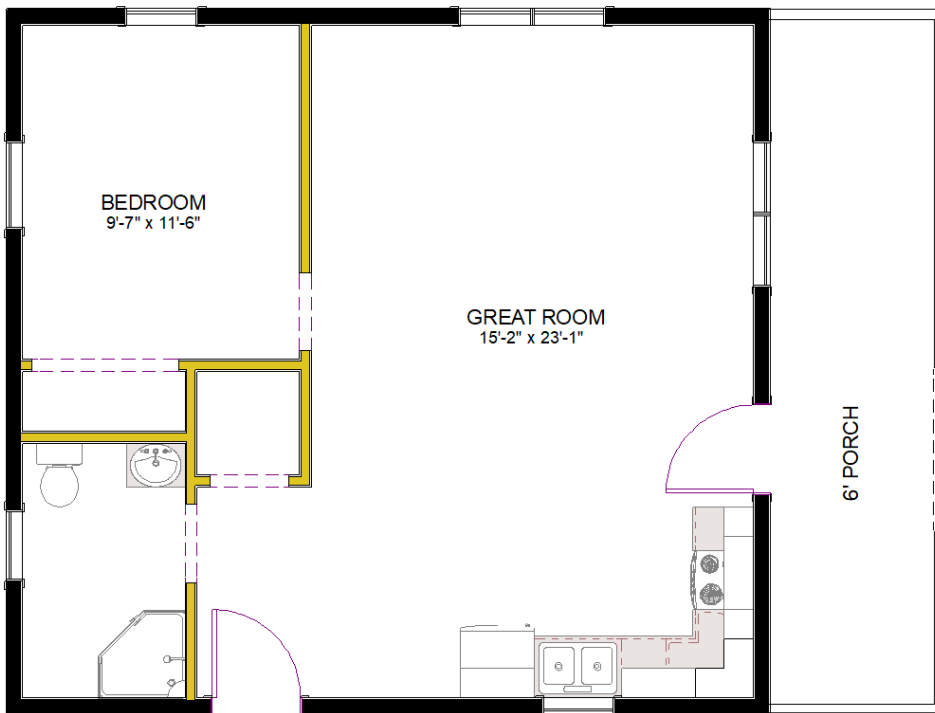


| | |
|--------------|-----------------|
| 20x28 | \$59,475 |
| 20x32 | \$65,820 |

Katahdin

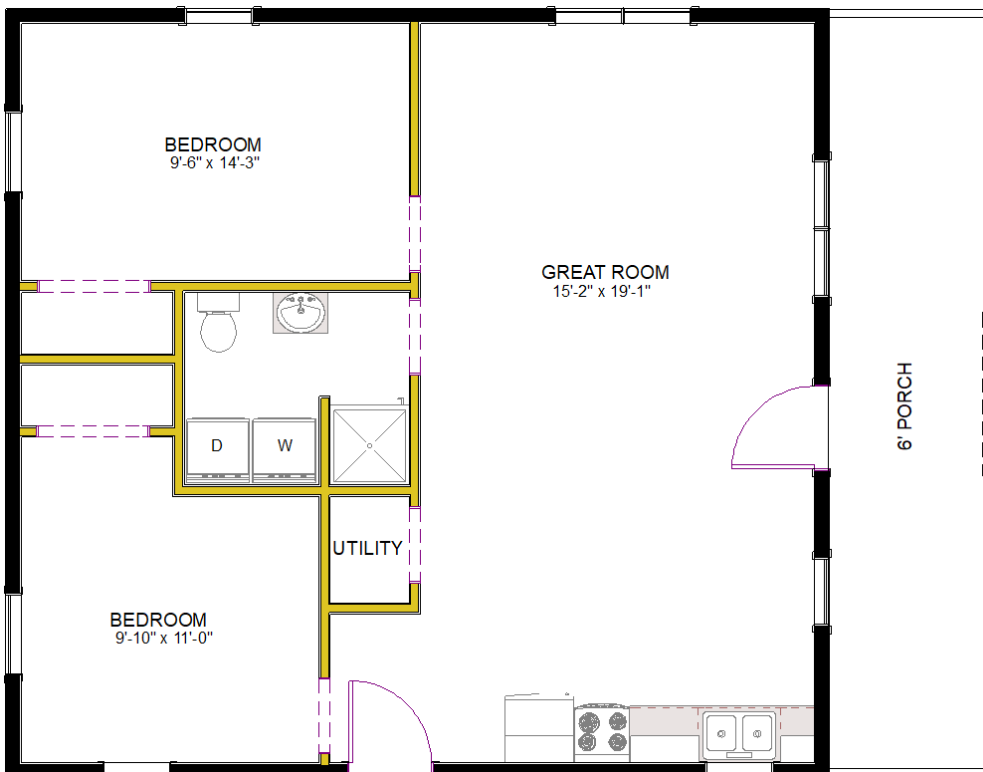
2026

24x32 Plan Shown



| | |
|--------------|-----------------|
| <u>24x28</u> | <u>\$70,640</u> |
| <u>24x32</u> | <u>\$77,115</u> |
| <u>24x36</u> | <u>\$83,745</u> |
| <u>24x40</u> | <u>\$95,120</u> |

28x36 Plan Shown



| | |
|--------------|------------------|
| <u>28x28</u> | <u>\$83,345</u> |
| <u>28x32</u> | <u>\$90,500</u> |
| <u>28x36</u> | <u>\$97,670</u> |
| <u>28x44</u> | <u>\$113,685</u> |

Rockwood



Meets Modular
Code



1 Bedroom



Laundry



Kitchen



Full Bath

Construction Overview

Standard Features

- ~ Floor constructed with 2x10 joists spaced 16" O.C. with 3/4" OSB tongue & groove sub-floor
- ~ Walls constructed with 2x6 studs spaced 16" O.C. with 7/16" OSB sheathing and Tyvek housewrap
- ~ Roof constructed with engineered trusses spaced 24" O.C. with 5/8" OSB sheathing
- ~ GAF lifetime architectural shingles over synthetic roof underlayment with ice & watershield at eaves
- ~ Porch finished with 1" composite decking and metal railings (log railings optional)
- ~ Exterior log siding is 2x8 tongue and groove white pine with 5-year urethane applied
- ~ Provia insulated vinyl windows; double-hung with max efficiency triple pane Low-E/Argon
- ~ Storm door for single entry doors not covered by porch
- ~ Exterior steps with metal railings

Insulation

- ~ Foundation: R14 closed cell spray foam, 2" thick on interior (pluss mileage fee, TBD per location)
- ~ Walls: R23 fiberglass batts (R29 optional)
- ~ Ceiling: R49 cellulose

Interior

- ~ Fusion Vinyl Plank flooring; Color choices: Hemlock or Hickory (sheet vinyl in bathroom)
- ~ Walls & ceilings finished in 3/4" tongue & groove knotty-pine boards with 2-coat clear finish
- ~ Knotty-pine solid wood interior doors (v-groove arch top) with Schlage lever latches
- ~ Wood closet shelving - adjustable height

Kitchen

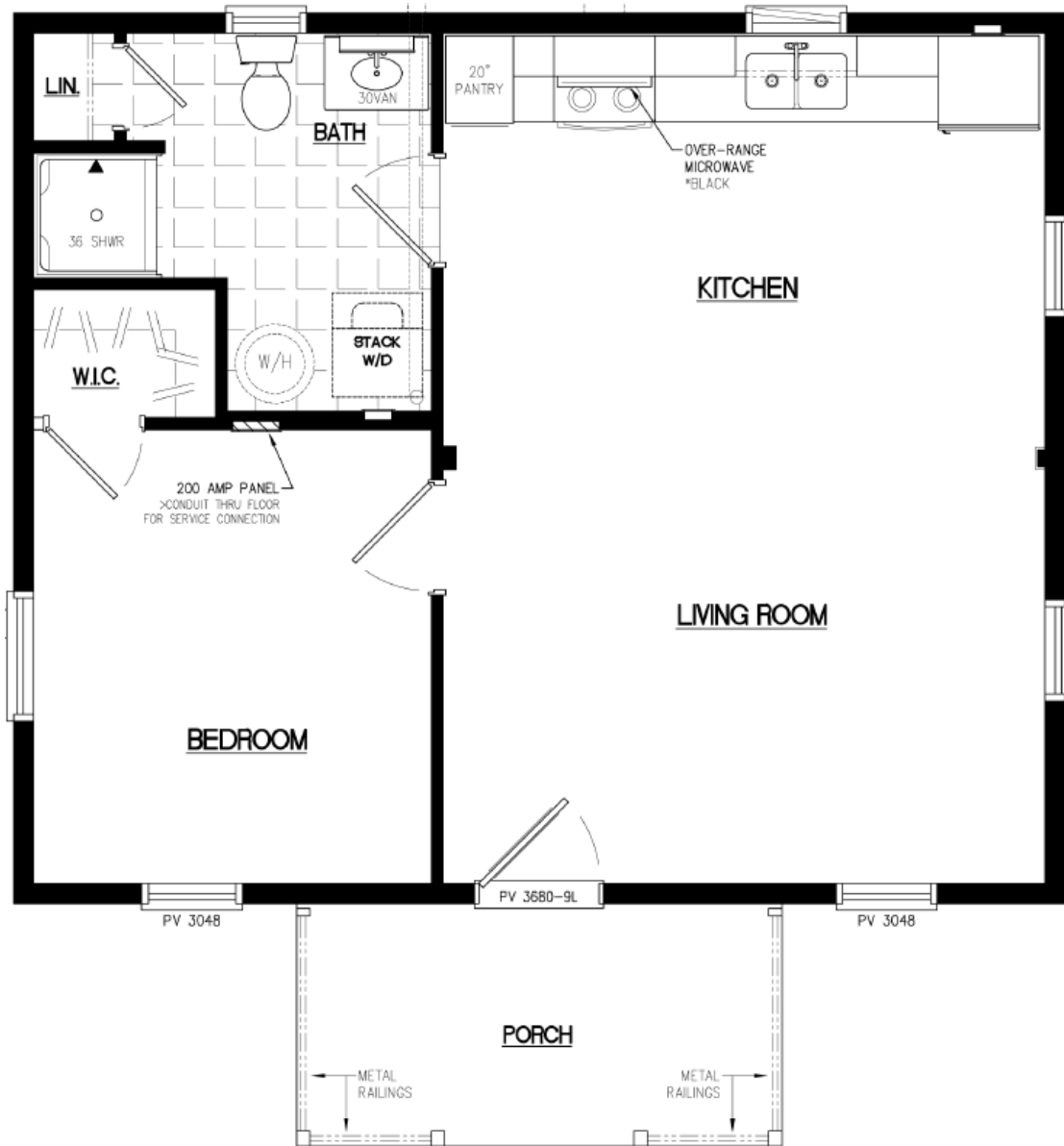
- ~ Alder, Maple or Hickory cabinetry with full-extension, soft-close doors and drawers
- ~ Wilsonart laminate counter tops with decorative edge profiles (color & profile of your choice)
- ~ Under-mount double-bowl stainless sink and Moen faucet with pull-down sprayer
- ~ Over-range microwave with thru-wall exhaust
- ~ Range electrical consists of (1) 240v & (1) 120v receptacle - for electric range or gas model

Bathroom

- ~ Shower is 1-piece fiberglass unit
- ~ Solid wood vanity cabinetry with cultured marble 1-piece top/sink
- ~ Water heater as shown on plan to be installed by others
- ~ Exhaust fan/light combination in ceiling, light over sink and 20 amp GFCI receptacle at sink
- ~ Medicine cabinet at sink, plus amenities: toilet paper holder, hand towel ring, towel bar, robe hook

Electrical

- ~ 200 AMP Leviton panel box with breakers and surge protector installed
- ~ Tamper-resistant receptacles spaced around rooms (less than 12' apart)
- ~ LED lighting indoor and outdoor (w/ dimmers at most interior lights)



22x26 \$164,670